

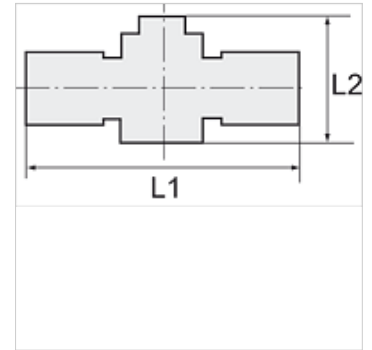
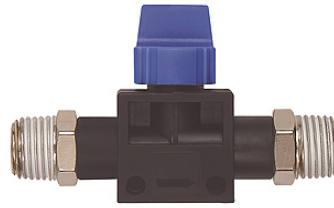
K-WV 3/2 KONISCH

3/2-way pilot valves with conical male thread, coated

HANSA FLEX

Caractéristiques

| | |
|------------------------------|--|
| Pression de service | Max. 15 bar, coarse vacuum |
| Domaine d'utilisation | Air, vacuum |
| Tuyaux recommandés | PU or PA (nylon) |
| Médiums | Compressed air and all gases or liquids that are compatible with the materials |
| Plage de température | -20 °C to +80 °C |
| Surface d'étanchéité | Parallel version: O-ring in housing, Conical version: thread coating |
| Matériau | Plastic, Nickel plated brass |
| Bague de pression | Plastic |



Remarque

Autres informations sur demande.

Description

Push-in fittings series manufactured in plastic and nickel-plated brass. All parts are suitable for use with hoses, tubes or pipes made of plastic and copper.

Article

| Désignation | Filetage 1 | Filetage 2 | L1 (mm) | L2 (mm) |
|-----------------------|------------|------------|------------|------------|
| K- 07 40 46 31 | R 1/8 | R 1/8 | 65,0 | 41,5 |
| K- 07 40 46 30 | R 1/4 | R 1/4 | 70,0 | 41,5 |
| K- 07 40 46 32 | R 3/8 | R 3/8 | 83,5 | 46,0 |