

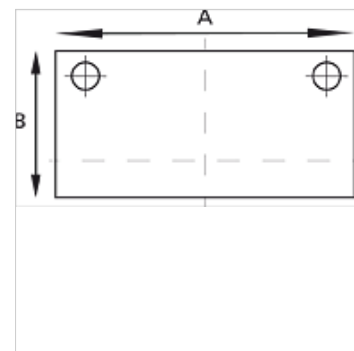
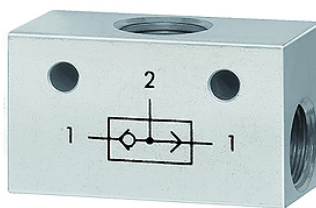
K-ODER-VENTIL

OR valves

HANSA FLEX

Caractéristiques

Pression de service	2 - 10 bar
Plage de température	-10 °C to +80 °C
Débit à 6,3 bar et Δ 1 bar	500 NI/min (G 1/8), 1300 NI/min (G 1/4)
Corps de vanne	Aluminium
Sphère	Stainless steel
Joint	NBR



Remarque

Autres informations sur demande.

Description

The valve has two inlets and one outlet. A signal appears at the outlet when the left or right inlet is pressurised.
If the pressure at the two inlets is different, the stronger of the two signals appears at the outlet.

Article

Désignation	Filets	A (mm)	B (mm)
K- 07 15 26 05	3 x G 1/8	36,0	20,0
K- 07 15 26 04	3 x G 1/4	43,0	25,0