

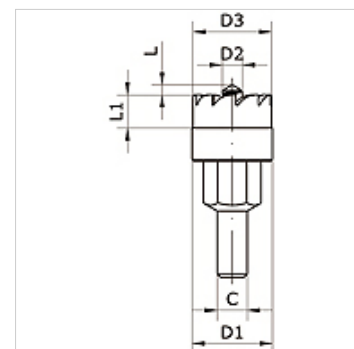
# K-KRONENBOHR SCHN-FLAN 20-63 INFI

Core drill for quick assembly  $\varnothing$  20 mm –  $\varnothing$  63 mm

**HANSA FLEX**

## Caractéristiques

Matériau Steel (HSS)



## Article

Désignation	pour $\varnothing$ ext. du tube en mm	C (mm)	D1 (mm)	D2 (mm)	D3 (mm)	L (mm)	L1 (mm)
K- 07 40 54 52	32, 40	9,0	24,0	6	23,5	3,0	10,0
K- 07 40 54 53	50, 63	9,0	31,0	6	30,5	3,0	9,0