

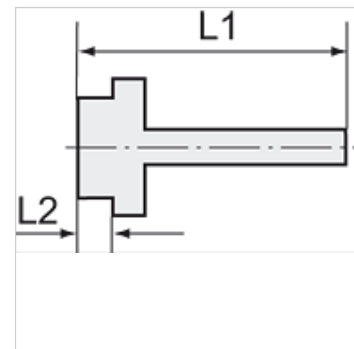
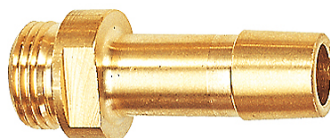
K-EST 12 MS

Male stems for coupling NW12 MS

HANSA FLEX

Caractéristiques

Pression de service	10 bar
Température de fluide	max. +90 °C
Température ambiante	Max. +90 °C
Matériau	Brass with a bare metal surface



Remarque

The dimensions of the standard screw fittings may change slightly during the life of the catalogue as a result of optimisation processes.
Autres informations sur demande.

Informations supplémentaires

Further types and dimensions on request.

Article

Désignation	Filets	pour tuyau	L1 (mm)	L2 (mm)	SW
K- 07 35 00 88	G 1/2	LW 16 mm	58,0	10,0	20 mm