

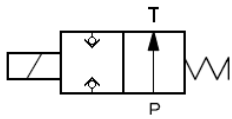
HK DLEH

Wegesitzventil NG6

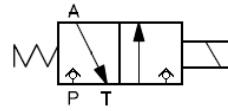
Solenoid valve poppet type Size6



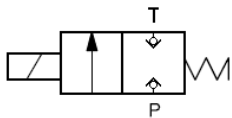
Schaltensymbole, Ausführungen / Symbols, Design



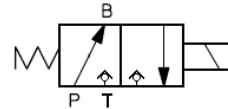
HK DLEH 2A X 24DC



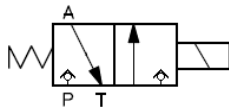
HK DLEH 3A X 24DC



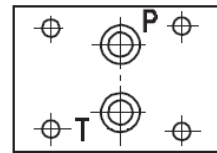
HK DLEH 2C X 24DC



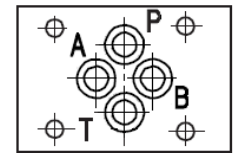
HK DLEH 3C X 24DC



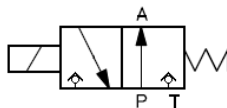
HK DLEHM 3A X 24DC



HK DLEH

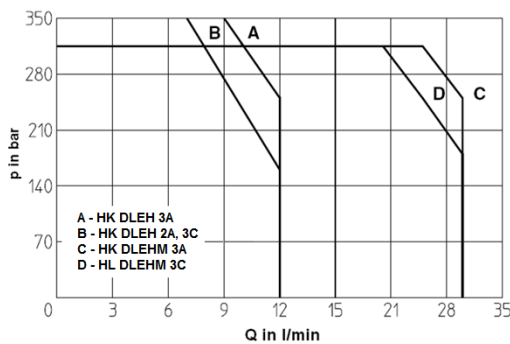


HK DLEHM

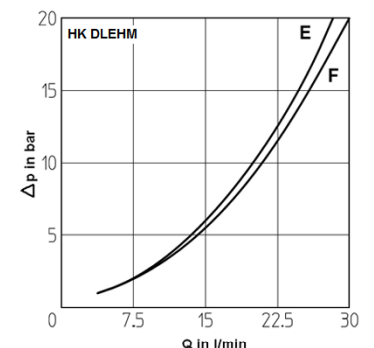
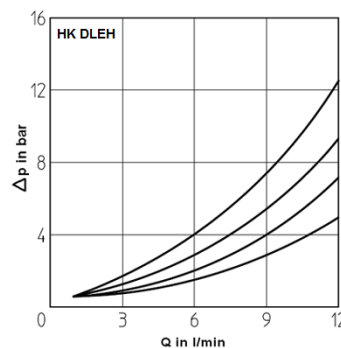


HK DLEHM 3C X 24DC

Kolbentypen, Durchflussrichtungen, Q/Δp – Kennlinien / Spool type, flow direction, Q/Δp - diagram



Schaltleistungsgrenzen
Operating limits



Valve type	Flow direction	
	P → A (T) (P → B)	A → T (B → T)
DLEH 2A	B	–
DLEH 2C	C	–
DLEH 3A	D	C
DLEH 3C	C	A
DLEHM 3A	F	E
DLEHM 3C	F	E

HK DLEH

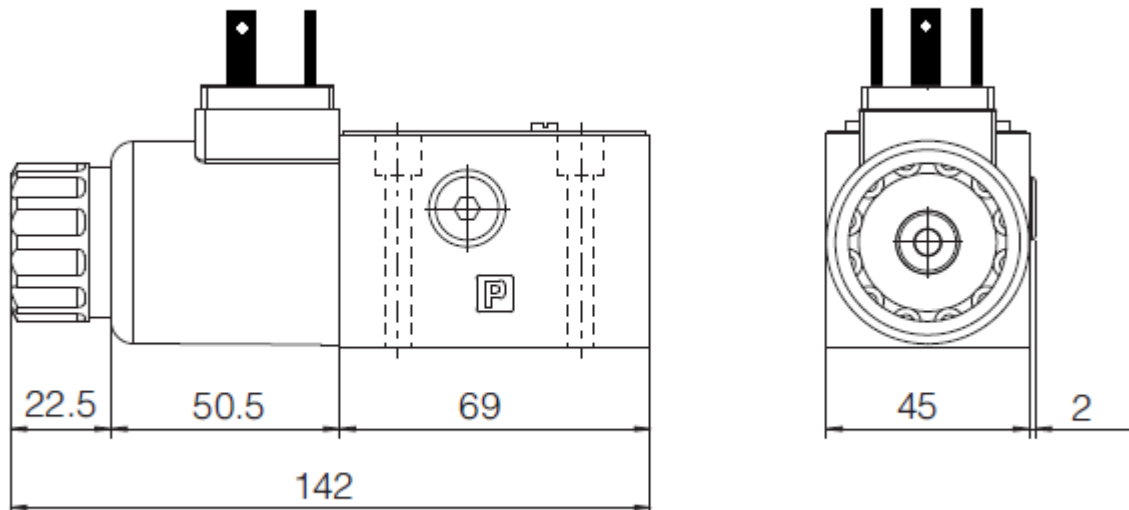
Wegesitzventil NG6

Solenoid valve poppet type Size6

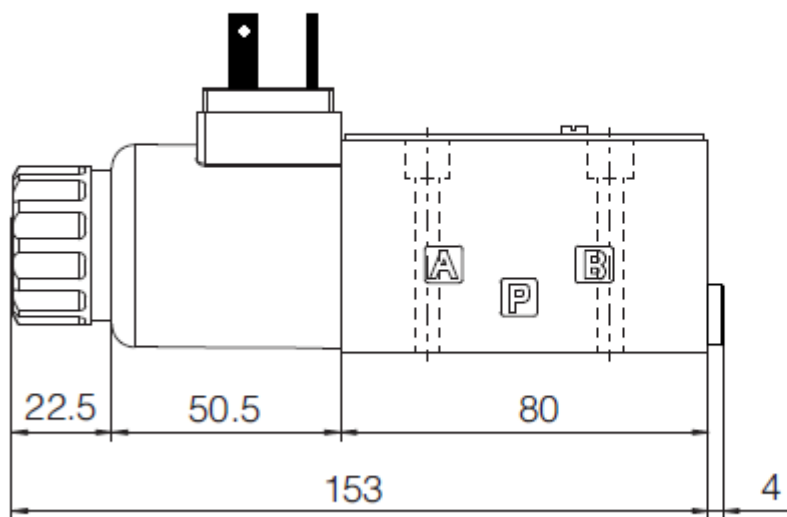
HANSA FLEX

Abmessungen / Dimensions

HK DLEH



HK DLEHM



Schraubensatz: 4 Inbusschrauben M5x50 12.9

Screw set: 4 socket head screws M5x50 12.9