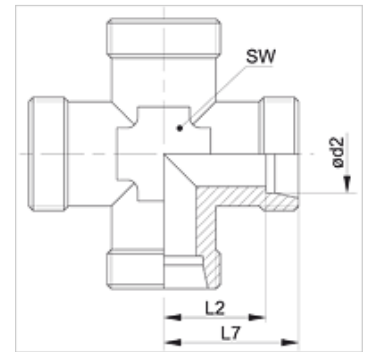


### Karakteristike

vodoravno Priključak 1 - 4	metrički vanjski navoji, cilindrični
Oblik brtve 1 - 4	24° unutarnji konus
Izvedba	Vijčani spoj
Oblik izrade	K oblik
Norma	DIN 2353 ISO 8434-1
Opseg isporuke	Nastavak (bez preturke matice i nareznog prstena)
Materijal	Čelik
Površinska zaštita	galvanski premaz



### Napomena

Upute za montažu, ugradnju, tlačno opterećenje i dopuštene radne temperature pronaći ćete u tehničkim informacijama za vijčane spojeve cijevi.

### Artikli

Naziv	Seriya	Radni tlak bari	Ø d2 (mm)	L2 (mm)	L7 (mm)	SW (mm)
XK 04 LL	LL	PN 100	4	11,0	15,0	9
XK 05 LL	LL	PN 100	5	9,5	15,0	9
XK 06 LL	LL	PN 100	6	9,5	15,0	9
XK 08 LL	LL	PN 100	8	11,5	17,0	12
XK NW 04 HL	L	PN 315	6	12,0	19,0	12
XK NW 06 HL	L	PN 315	8	14,0	21,0	12
XK NW 08 HL	L	PN 315	10	15,0	22,0	14
XK NW 10 HL	L	PN 315	12	17,0	24,0	17
XK NW 13 HL	L	PN 315	15	21,0	28,0	19
XK NW 16 HL	L	PN 315	18	23,5	31,0	24
XK NW 20 HL	L	PN 160	22	27,5	35,0	27
XK NW 25 HL	L	PN 160	28	30,5	38,0	36
XK NW 32 HL	L	PN 160	35	34,5	45,0	41
XK NW 40 HL	L	PN 160	42	40,0	51,0	50
XK NW 03 HS	S	PN 630	6	16,0	23,0	12
XK NW 04 HS	S	PN 630	8	17,0	24,0	14
XK NW 06 HS	S	PN 630	10	17,5	25,0	17
XK NW 08 HS	S	PN 630	12	21,5	29,0	17
XK NW 10 HS	S	PN 630	14	22,0	30,0	19
XK NW 13 HS	S	PN 400	16	24,5	33,0	24
XK NW 16 HS	S	PN 400	20	26,5	37,0	27
XK NW 20 HS	S	PN 400	25	30,0	42,0	36
XK NW 25 HS	S	PN 400	30	35,5	49,0	41
XK NW 32 HS	S	PN 315	38	41,0	57,0	50

Seriya: LL = veoma lagan L = lagan S = težak - PN = nazivni tlak PB = maks. radni tlak - Ø d2 = vanjski promjer cijevi

### Varijante proizvoda

XK VA	Vijčani spoj, križni oblik, Oplemenjeni čelik
K	Vijčani spoj, križni oblik, Čelik