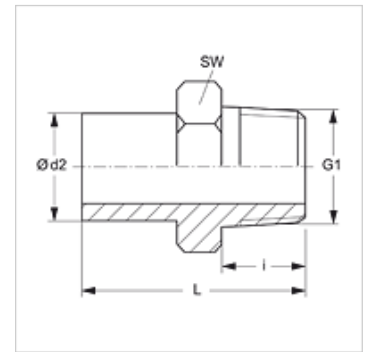


Karakteristike

Priključak 1	NPT vanjski navoji
Oblik brtve 1	brtvljenje navoja
Priključak 2	Nastavak cijevi nije prethodno montiran
Oblik brtve 2	Spoj za narezni prsten
Izvedba	Uvrtni nastavci
Oblik izrade	ravno
Norma	DIN 2353 ISO 8434-1
Opseg isporuke	Nastavak (bez preturme matice i nareznog prstena)
Materijal	Čelik
Površinska zaštita	galvanski premaz



Napomena

Upute za montažu, ugradnju, tlačno opterećenje i dopuštene radne temperature pronaći ćete u tehničkim informacijama za vijčane spojeve cijevi.

Artikli

Naziv	Seriya	Radni tlak bari	Ø d2 (mm)	G1	i (mm)	L (mm)	SW (mm)
NVN NW 04 L	L	PN 315	6	1/8" -27 NPT	10,0	33,0	11
NVN NW 06 L	L	PN 315	8	1/4" - 18 NPT	15,0	39,0	14
NVN NW 08 L	L	PN 315	10	1/4" - 18 NPT	15,0	40,0	14
NVN NW 10 L	L	PN 315	12	3/8" - 18 NPT	15,0	44,5	19
NVN NW 13 L	L	PN 315	15	1/2" - 14 NPT	20,0	48,0	22
NVN NW 16 L	L	PN 315	18	1/2" - 14 NPT	20,0	49,0	22
NVN NW 20 L	L	PN 160	22	3/4" - 14 NPT	20,0	49,0	27
NVN NW 25 L	L	PN 160	28	1" -11,5 NPT	25,0	55,5	36
NVN NW 32 L	L	PN 160	35	1,1/4" - 11,5 NPT	26,0	63,0	46
NVN NW 40 L	L	PN 160	42	1,1/2" - 11,5 NPT	26,0	65,0	50
NVN NW 03 S	S	PN 630	6	1/4" - 18 NPT	15,0	40,0	14
NVN NW 04 S	S	PN 630	8	1/4" - 18 NPT	15,0	40,0	14
NVN NW 06 S	S	PN 630	10	3/8" - 18 NPT	15,0	44,0	19
NVN NW 08 S	S	PN 630	12	3/8" - 18 NPT	15,0	44,5	19
NVN NW 10 S	S	PN 630	14	1/2" - 14 NPT	20,0	53,5	22
NVN NW 13 S	S	PN 400	16	1/2" - 14 NPT	20,0	53,5	22
NVN NW 16 S	S	PN 400	20	3/4" - 14 NPT	20,0	58,0	27
NVN NW 20 S	S	PN 400	25	1" -11,5 NPT	25,0	68,5	36
NVN NW 25 S	S	PN 400	30	1,1/4" - 11,5 NPT	26,0	73,5	46
NVN NW 32 S	S	PN 315	38	1,1/2" - 11,5 NPT	26,0	78,0	50

Seriya: LL = veoma lagan L = lagan S = težak - PN = nazivni tlak PB = maks. radni tlak - Ø d2 = vanjski promjer cijevi

Varijante proizvoda

NVN VA Uvrtni nastavci, Oplemenjeni čelik

Dodatni elementi

VOM Nastavci za predmontažu