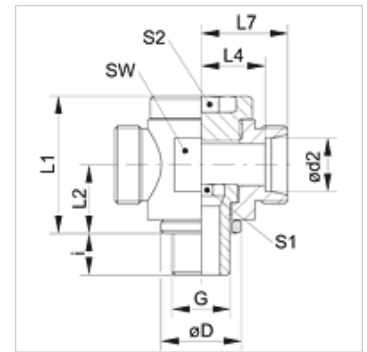


Karakteristike

| | |
|---------------------------|---|
| Priključak 1 | BSP vanjski navoj, cilindrični |
| Oblik brtve 1 | Četvrtasti brtveni prsten |
| Priključak 2 + 3 | metrički vanjski navoji, cilindrični |
| Oblik brtve 2 + 3 | 24° unutarnji konus |
| Izvedba | Zakretni vijčani spojevi, bez prigušivanja |
| Oblik izrade | T oblik |
| Norma | ISO 8434-1 |
| Opseg isporuke | Nastavak (bez preturke matice i nareznog prstena) |
| Materijal | Čelik |
| Površinska zaštita | galvanski premaz |



Napomena

Upute za montažu, ugradnju, tlačno opterećenje i dopuštene radne temperature pronaći ćete u tehničkim informacijama za vijčane spojeve cijevi.

Artikli

| Naziv | Seriya | Radni tlak bari | Ø d2 (mm) | G | Ø D (mm) | i (mm) | L1 (mm) | L2 (mm) | L4 (mm) | L7 (mm) | SW (mm) | S1 | S2 |
|---------------|--------|-----------------|-----------|---------------|----------|--------|---------|---------|---------|---------|---------|----|----|
| XDTR NW 04 HL | L | PN 160 | 6 | G 1/8" - 28 | 14,0 | 8 | 24 | 12 | 12,0 | 19 | 19 | 6 | 6 |
| XDTR NW 06 HL | L | PN 160 | 8 | G 1/4" - 19 | 18,0 | 12 | 30 | 15 | 14,0 | 21 | 22 | 8 | 8 |
| XDTR NW 08 HL | L | PN 100 | 10 | G 1/4" - 19 | 18,0 | 12 | 30 | 15 | 15,0 | 22 | 22 | 8 | 8 |
| XDTR NW 10 HL | L | PN 100 | 12 | G 3/8" - 19 | 22,0 | 12 | 36 | 18 | 17,5 | 24 | 27 | 10 | 10 |
| XDTR NW 13 HL | L | PN 100 | 15 | G 1/2" - 14 | 26,0 | 14 | 40 | 20 | 20,0 | 27 | 30 | 12 | 12 |
| XDTR NW 16 HL | L | PN 100 | 18 | G 1/2" - 14 | 26,0 | 14 | 40 | 20 | 19,5 | 27 | 30 | 12 | 12 |
| XDTR NW 20 HL | L | PN 100 | 22 | G 3/4" - 14 | 32,0 | 16 | 52 | 25 | 27,0 | 34 | 41 | 17 | 17 |
| XDTR NW 25 HL | L | PN 100 | 28 | G 1" - 11 | 39,0 | 18 | 58 | 29 | 29,5 | 37 | 46 | 22 | 22 |
| XDTR NW 32 HL | L | PN 63 | 35 | G 1,1/4" - 11 | 49,0 | 20 | 69 | 34 | 33,0 | 44 | 55 | 27 | 27 |
| XDTR NW 40 HL | L | PN 63 | 42 | G 1,1/2" - 11 | 55,0 | 22 | 84 | 41 | 40,0 | 51 | 70 | 32 | 32 |
| XDTR NW 03 HS | S | PN 160 | 6 | G 1/4" - 19 | 18,0 | 12 | 30 | 15 | 16,0 | 23 | 22 | 8 | 8 |
| XDTR NW 04 HS | S | PN 160 | 8 | G 1/4" - 19 | 18,0 | 12 | 30 | 15 | 16,0 | 23 | 22 | 8 | 8 |
| XDTR NW 06 HS | S | PN 100 | 10 | G 3/8" - 19 | 22,0 | 12 | 36 | 18 | 18,0 | 25 | 27 | 10 | 10 |
| XDTR NW 08 HS | S | PN 100 | 12 | G 3/8" - 19 | 22,0 | 12 | 36 | 18 | 24,0 | 25 | 27 | 10 | 10 |
| XDTR NW 10 HS | S | PN 100 | 14 | G 1/2" - 14 | 26,0 | 14 | 42 | 21 | 22,0 | 30 | 32 | 12 | 12 |
| XDTR NW 13 HS | S | PN 100 | 16 | G 1/2" - 14 | 26,0 | 14 | 42 | 21 | 21,5 | 30 | 32 | 12 | 12 |
| XDTR NW 16 HS | S | PN 100 | 20 | G 3/4" - 14 | 32,0 | 16 | 57 | 28 | 28,5 | 39 | 46 | 17 | 17 |
| XDTR NW 20 HS | S | PN 100 | 25 | G 1" - 11 | 39,0 | 18 | 62 | 31 | 31,0 | 43 | 50 | 22 | 22 |
| XDTR NW 25 HS | S | PN 63 | 30 | G 1,1/4" - 11 | 49,0 | 20 | 74 | 36 | 36,5 | 50 | 60 | 27 | 27 |
| XDTR NW 32 HS | S | PN 63 | 38 | G 1,1/2" - 11 | 55,0 | 22 | 84 | 41 | 41,0 | 57 | 70 | 32 | 32 |

Seriya: LL = veoma lagan L = lagan S = težak - PN = nazivni tlak PB = maks. radni tlak - Ø d2 = vanjski promjer cijevi

Varijante proizvoda

| | |
|----------------|---|
| XDTR VA | Zakretni vijčani spoj, bez prigušivanja, T oblik, Nastavak (bez preturke matice i nareznog prstena) |
| DTR | Zakretni vijčani spoj, bez prigušivanja, T oblik, Nastavak s preturkom i nareznim prstenom |