

### Karakteristike

**Priključak 1** BSP vanjski navoj, cilindrični

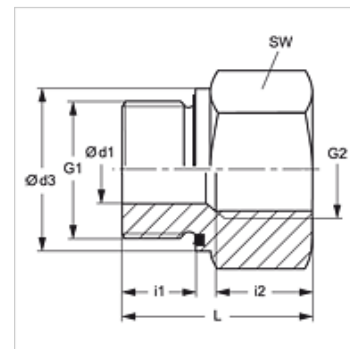
**Oblik brtve 1** Profil E

**Priključak 2** BSP unutarnji navoj, cilindrični

**Izvedba** Dvostazna redukcija

**Oblik izrade** duga

**Materijal** Oplemenjeni čelik



### Napomena

Upute za montažu, ugradnju, tlačno opterećenje i dopuštene radne temperature pronaći ćete u tehničkim informacijama za vijčane spojeve cijevi.

### Napomene uz narudžbu

Ulošci NBR ulošci brtve

FPM (Viton) na zahtjev

### Artikli

| Naziv              | Radni tlak bari | Ø d1 (mm) | G1            | G2            | Ø d3 (mm) | i1 (mm) | i2 (mm) | L (mm) | SW (mm) |
|--------------------|-----------------|-----------|---------------|---------------|-----------|---------|---------|--------|---------|
| RIL NW 03 06 ED VA | PN 400          | 4         | G 1/8" - 28   | G 1/4" - 19   | 14,0      | 8       | 17,0    | 31     | 19      |
| RIL NW 03 10 ED VA | PN 400          | 4         | G 1/8" - 28   | G 3/8" - 19   | 14,0      | 8       | 17,0    | 32     | 24      |
| RIL NW 06 03 ED VA | PN 400          | 5         | G 1/4" - 19   | G 1/8" - 28   | 18,7      | 12      | 12,0    | 28     | 19      |
| RIL NW 06 10 ED VA | PN 400          | 5         | G 1/4" - 19   | G 3/8" - 19   | 18,7      | 12      | 17,0    | 36     | 24      |
| RIL NW 06 13 ED VA | PN 400          | 5         | G 1/4" - 19   | G 1/2" - 14   | 18,7      | 12      | 20,0    | 40     | 27      |
| RIL NW 06 20 ED VA | PN 400          | 5         | G 1/4" - 19   | G 3/4" - 14   | 18,7      | 12      | 22,0    | 43     | 36      |
| RIL NW 10 06 ED VA | PN 400          | 8         | G 3/8" - 19   | G 1/4" - 19   | 22,0      | 12      | 17,0    | 36     | 22      |
| RIL NW 10 13 ED VA | PN 400          | 8         | G 3/8" - 19   | G 1/2" - 14   | 22,0      | 12      | 20,0    | 41     | 27      |
| RIL NW 10 20 ED VA | PN 315          | 8         | G 3/8" - 19   | G 3/4" - 14   | 22,0      | 12      | 22,0    | 44     | 36      |
| RIL NW 13 10 ED VA | PN 400          | 12        | G 1/2" - 14   | G 3/8" - 19   | 26,7      | 14      | 17,0    | 36     | 27      |
| RIL NW 13 20 ED VA | PN 315          | 12        | G 1/2" - 14   | G 3/4" - 14   | 26,7      | 14      | 22,0    | 46     | 36      |
| RIL NW 13 25 ED VA | PN 315          | 12        | G 1/2" - 14   | G 1" - 11     | 26,7      | 14      | 24,5    | 49     | 41      |
| RIL NW 13 32 ED VA | PN 315          | 10        | G 1/2" - 14   | G 1,1/4" - 11 | 26,7      | 14      | 26,5    | 53     | 55      |
| RIL NW 20 13 ED VA | PN 315          | 16        | G 3/4" - 14   | G 1/2" - 14   | 32,0      | 16      | 20,0    | 41     | 32      |
| RIL NW 20 25 ED VA | PN 315          | 16        | G 3/4" - 14   | G 1" - 11     | 32,0      | 16      | 24,5    | 51     | 41      |
| RIL NW 20 32 ED VA | PN 315          | 16        | G 3/4" - 14   | G 1,1/4" - 11 | 32,0      | 16      | 26,5    | 55     | 55      |
| RIL NW 20 40 ED VA | PN 250          | 16        | G 3/4" - 14   | G 1,1/2" - 11 | 32,0      | 16      | 28,5    | 57     | 60      |
| RIL NW 25 20 ED VA | PN 315          | 20        | G 1" - 11     | G 3/4" - 14   | 39,7      | 18      | 22,0    | 47     | 41      |
| RIL NW 25 32 ED VA | PN 315          | 20        | G 1" - 11     | G 1,1/4" - 11 | 39,7      | 18      | 26,5    | 57     | 55      |
| RIL NW 25 40 ED VA | PN 250          | 20        | G 1" - 11     | G 1,1/2" - 11 | 39,7      | 18      | 28,0    | 59     | 60      |
| RIL NW 32 25 ED VA | PN 315          | 25        | G 1,1/4" - 11 | G 1" - 11     | 49,7      | 20      | 24,5    | 52     | 50      |
| RIL NW 32 40 ED VA | PN 250          | 25        | G 1,1/4" - 11 | G 1,1/2" - 11 | 49,7      | 20      | 28,5    | 60     | 60      |
| RIL NW 40 32 ED VA | PN 250          | 32        | G 1,1/2" - 11 | G 1,1/4" - 11 | 55,0      | 22      | 26,5    | 58     | 55      |
| RIL NW 50 40 ED VA | PN 160          | 40        | G 2" - 11     | G 1,1/2" - 11 | 68,0      | 24      | 28,5    | 62     | 70      |

PN = nazivni tlak PB = maks. radni tlak

### Varijante proizvoda

**RIL ED** Dvostazna redukcija, duga, Čelik

### Rezervni dijelovi

**WD V** Meka brtva JIC