

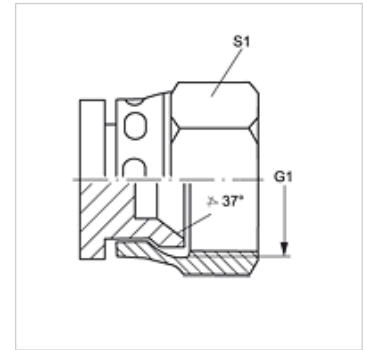
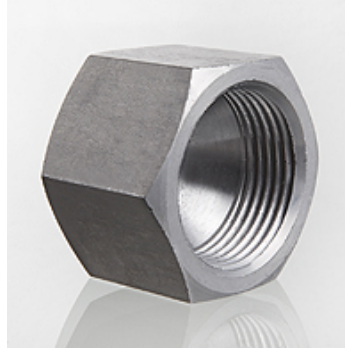
VERSCHLUSS AJ

Zaporna matica

HANSA FLEX

Karakteristike

| | |
|--------------------|----------------------|
| Priključak 1 | UN/UNF navoji matice |
| Oblik brtve 1 | 74° unutarnji konus |
| Izvedba | Zaporna matica |
| Oblik izrade | ravno |
| Materijal | Čelik |
| Površinska zaštita | galvanski premaz |



Artikli

| Naziv | G1 | S1 |
|------------------|----------------|----|
| VERSCHLUSS AJ 04 | 7/16" -20 UNF | 14 |
| VERSCHLUSS AJ 05 | 1/2" -20 UNF | 17 |
| VERSCHLUSS AJ 06 | 9/16" - 18 UNF | 19 |
| VERSCHLUSS AJ 08 | 3/4" - 16 UNF | 22 |
| VERSCHLUSS AJ 10 | 7/8" -14 UNF | 27 |
| VERSCHLUSS AJ 12 | 1.1/16" -12 UN | 32 |
| VERSCHLUSS AJ 14 | 1,3/16" -12 UN | 35 |
| VERSCHLUSS AJ 16 | 1,5/16" -12 UN | 41 |
| VERSCHLUSS AJ 20 | 1,5/8" -12 UN | 50 |
| VERSCHLUSS AJ 24 | 1,7/8" -12 UN | 60 |
| VERSCHLUSS AJ 32 | 2,1/2" -12 UN | 75 |

SW, S1, S2 = širina ključa

Varijante proizvoda

VERSCHLUSS AJ VA Zaporna matica, Oplemenjeni čelik