

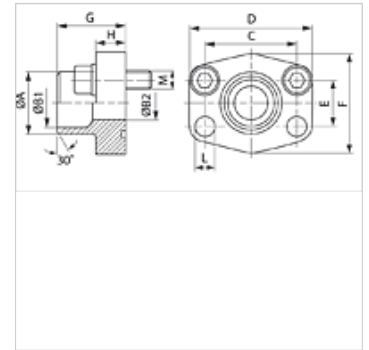
AFS SRE M (3000 / 6000 PSI)

SAE vijenci za navarivanje

HANSA FLEX

Karakteristike

Norma	SAE J 518 C ISO 6162
Oblik izrade	ravno
Izvedba	SAE vijenci za navarivanje
Pričvršćenje	vijčani provrt
Opseg isporuke	s kompletom metričkih vijaka i O prstenom
Materijal	S355J2G3 (ST52.3)
Površinska zaštita	crno nauljeno



Napomena

Navedeni maksimalni radni tlak odnosi se na priрубnicu! Stvarni radni tlak određuje cijev (debljina stjenke) i kvaliteta cijevi!

Artikli

Naziv	Tlačni niz	PB 10.9	Veličina Cijev	A	B1	B2	G	C	D	E	F	H	L	M metr.	
		(bar)		(mm)	(mm)	(mm)	(mm)	(mm)	(mm)	(mm)	(mm)	(mm)	(mm)		
AFS 80 SRE 20 M	3000 PSI	350	1/2"	20 x 3	20	14,0	14	35,0	38,1	54	17,5	46	16,0	9,0	M 8 x 30
AFS 80 SRE 22 M	3000 PSI	350	1/2"	22 x 3	22	16,0	13	35,0	38,1	54	17,5	46	16,0	9,0	M 8 x 30
AFS 100 SRE 25 M	3000 PSI	350	3/4"	25 x 3	25	19,0	19	36,0	47,6	65	22,2	50	18,0	11,0	M 10 x 35
AFS 100 SRE 28 M	3000 PSI	350	3/4"	28 x 3	28	21,5	19	36,0	47,6	65	22,2	50	18,0	11,0	M 10 x 35
AFS 102 SRE 30 M	3000 PSI	315	1"	30 x 4	30	22,0	22	38,0	52,4	70	26,2	55	18,0	11,0	M 10 x 35
AFS 102 SRE 35 M	3000 PSI	315	1"	35 x 4	35	27,0	25	38,0	52,4	70	26,2	55	18,0	11,0	M 10 x 35
AFS 104 SRE 38 M	3000 PSI	250	1.1/4"	38 x 4	38	30,0	30	41,0	58,7	79	30,2	68	21,0	11,5	M 10 x 40
AFS 104 SRE 42 M	3000 PSI	250	1.1/4"	42 x 3	43	36,0	31	41,0	58,7	79	30,2	68	21,0	11,5	M 10 x 40
AFS 106 SRE 38 M	3000 PSI	200	1.1/2"	38 x 4	38	30,0	30	44,0	69,9	93	35,7	78	25,0	13,5	M 12 x 45
AFS 106 SRE 42 M	3000 PSI	200	1.1/2"	42 x 3	42	36,0	36	44,0	69,9	93	35,7	78	25,0	13,5	M 12 x 45
AFS 106 SRE 48 M	3000 PSI	200	1.1/2"	48,3 x 4,5	49	38,0	38	44,0	69,9	93	35,7	78	25,0	13,5	M 12 x 45
AFS 108 SRE 60 M	3000 PSI	200	2"	60,3 x 5,6	61	49,0	49	45,0	77,8	102	42,9	90	25,0	13,5	M 12 x 45
AFS 110 SRE 76 M	3000 PSI	160	2.1/2"	76,1 x 7,1	77	62,0	62	50,0	88,9	114	50,8	105	25,0	13,5	M 12 x 45
AFS 112 SRE 76 M	3000 PSI	160	3"	76,1 x 7,1	77	62,0	62	51,0	106,4	134	61,9	124	26,0	17,5	M 16 x 50
AFS 401 SRE 20 M	6000 PSI	400	1/2"	20 x 3	20	14,0	14	34,0	40,5	54	18,2	46	16,0	9,0	M 8 x 30
AFS 402 SRE 20 M	6000 PSI	400	3/4"	20 x 3	20	14,0	14	35,0	50,8	71	23,8	55	21,0	11,0	M 10 x 35
AFS 402 SRE 25 M	6000 PSI	400	3/4"	25 x 4	25	17,0	17	35,0	50,8	71	23,8	55	21,0	11,0	M 10 x 35
AFS 403 SRE 25 M	6000 PSI	400	1"	25 x 4	25	17,0	17	42,0	57,2	81	27,8	65	25,0	13,0	M 12 x 45
AFS 403 SRE 30 M	6000 PSI	400	1"	30 x 4	30	22,0	22	42,0	57,2	81	27,8	65	25,0	13,0	M 12 x 45
AFS 404 SRE 30 M	6000 PSI	400	1.1/4"	30 x 4	30	22,0	22	44,0	66,7	95	31,8	78	25,0	15,0	M 14 x 45
AFS 404 SRE 38 M	6000 PSI	400	1.1/4"	38 x 6	38	26,0	26	44,0	66,7	95	31,8	78	25,0	15,0	M 14 x 45
AFS 405 SRE 38 M	6000 PSI	400	1.1/2"	38 x 6	38	26,0	26	56,0	49,4	112	36,5	94	28,0	17,0	M 16 x 50
AFS 405 SRE 48 M	6000 PSI	400	1.1/2"	48,3 x 8	49	32,0	32	56,0	79,4	112	36,5	94	28,0	17,0	M 16 x 50
AFS 405 SRE 60 M	6000 PSI	400	1.1/2"	60,3 x 10	61	40,0	40	56,0	79,4	112	36,5	94	27,0	17,0	M 16 x 50
AFS 406 SRE 60 M	6000 PSI	400	2"	60,3 x 10	61	40,0	40	65,0	96,8	134	44,5	114	37,0	21,0	M 20 x 60
AFS 406 SRE 76 M	6000 PSI	400	2"	76,1 x 12,5	76	50,0	48	80,0	96,8	134	44,5	122	33,0	21,0	M 20 x 60

PN = nazivni tlak PB = maks. radni tlak - Ø = vanjski promjer cijevi

Varijante proizvoda

AFS SRE (3000 PSI)	SAE vijenci za navarivanje, samo priрубnica
AFS SRE U (3000 / 6000 PSI)	SAE vijenci za navarivanje, s UNC kompletom vijaka i O prstenom