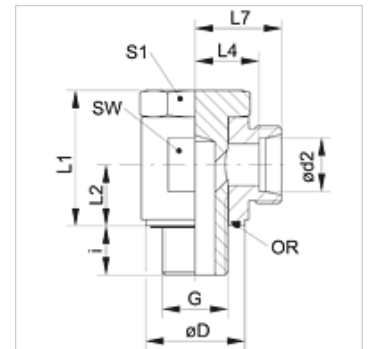


### Karakteristike

|                           |   |
|---------------------------|---|
| <b>Priključak 1</b>       | metrički vanjski navoji, cilindrični              |
| <b>Oblik brtve 1</b>      | Profil E  |
| <b>Priključak 2</b>       | metrički vanjski navoji, cilindrični              |
| <b>Oblik brtve 2</b>      | 24° unutarnji konus                               |
| <b>Izvedba</b>            | Zakretni vijčani spojevi, bez prigušivanja        |
| <b>Oblik izrade</b>       | Kutevi 90°  |
| <b>Norma</b>              | DIN 2353<br>ISO 8434-1                            |
| <b>Opseg isporuke</b>     | Nastavak (bez preturme matice i nareznog prstena) |
| <b>Materijal</b>          | Čelik   |
| <b>Površinska zaštita</b> | galvanski premaz                                  |



### Napomena

Upute za montažu, ugradnju, tlačno opterećenje i dopuštene radne temperature pronaći ćete u tehničkim informacijama za vijčane spojeve cijevi.

### Artikli

| Naziv             | Seriya | Radni tlak bari | Ø d2 (mm) | G          | Ø D (mm) | i (mm) | L1 (mm) | L2 (mm) | L4 (mm) | L7 (mm) | SW (mm) | S1 | OR           |
|-------------------|--------|-----------------|-----------|------------|----------|--------|---------|---------|---------|---------|---------|----|--------------|
| XSDOM 06 LL       | LL     | PN 100          | 6         | M 10 x 1   | 14,5     | 8,0    | 23,5    | 10,5    | 13,5    | 19,0    | 17      | 17 | 7,65 x 1,78  |
| XSDOM 08 LL       | LL     | PN 100          | 8         | M 10 x 1   | 14,5     | 8,0    | 23,5    | 10,5    | 13,5    | 19,0    | 17      | 17 | 7,65 x 1,78  |
| XSDOM NW 04 HL    | L      | PN 315          | 6         | M 10 x 1   | 14,0     | 8,0    | 24,0    | 10,5    | 12,0    | 19,0    | 17      | 17 | 7,65 x 1,78  |
| XSDOM NW 06 HL    | L      | PN 315          | 8         | M 12 x 1,5 | 17,0     | 12,0   | 30,0    | 14,0    | 14,5    | 21,5    | 22      | 19 | 11,10 x 1,78 |
| XSDOM NW 08 HL    | L      | PN 315          | 10        | M 14 x 1,5 | 19,0     | 12,0   | 30,0    | 14,0    | 15,5    | 22,5    | 22      | 19 | 11,10 x 1,78 |
| XSDOM NW 10 HL    | L      | PN 315          | 12        | M 16 x 1,5 | 21,0     | 12,0   | 36,0    | 16,5    | 18,0    | 25,0    | 27      | 24 | 14,00 x 1,78 |
| XSDOM NW 10 HL 18 | L      | PN 315          | 12        | M 18 x 1,5 | 23,5     | 12,0   | 35,0    | 16,5    | 18,0    | 25,0    | 27      | 24 | 18,77 x 1,78 |
| XSDOM NW 13 HL    | L      | PN 315          | 15        | M 18 x 1,5 | 23,0     | 12,0   | 39,5    | 18,5    | 21,5    | 28,5    | 30      | 27 | 18,77 x 1,78 |
| XSDOM NW 16 HL    | L      | PN 315          | 18        | M 22 x 1,5 | 27,0     | 14,0   | 45,0    | 21,5    | 21,0    | 28,5    | 32      | 30 | 18,77 x 1,78 |
| XSDOM NW 20 HL    | L      | PN 160          | 22        | M 26 x 1,5 | 31,0     | 16,0   | 53,0    | 24,0    | 27,5    | 35,0    | 41      | 36 | 23,81 x 2,62 |
| XSDOM NW 25 HL    | L      | PN 160          | 28        | M 33 x 2   | 39,0     | 18,0   | 66,0    | 30,5    | 32,0    | 39,5    | 50      | 46 | 29,82 x 2,62 |
| XSDOM NW 32 HL    | L      | PN 160          | 35        | M 42 x 2   | 49,0     | 20,0   | 76,0    | 35,5    | 36,0    | 46,5    | 60      | 55 | 37,77 x 2,62 |
| XSDOM NW 40 HL    | L      | PN 160          | 42        | M 48 x 2   | 55,0     | 22,0   | 87,0    | 40,5    | 40,5    | 51,5    | 70      | 60 | 41,28 x 3,53 |
| XSDOM NW 03 HS    | S      | PN 400          | 6         | M 12 x 1,5 | 17,5     | 12,0   | 30,0    | 14,0    | 16,5    | 23,5    | 22      | 19 | 11,10 x 1,78 |
| XSDOM NW 04 HS    | S      | PN 400          | 8         | M 14 x 1,5 | 19,0     | 12,0   | 30,0    | 14,0    | 16,5    | 23,5    | 22      | 19 | 11,10 x 1,78 |
| XSDOM NW 06 HS    | S      | PN 400          | 10        | M 16 x 1,5 | 21,0     | 12,0   | 35,0    | 16,5    | 18,5    | 26,0    | 27      | 24 | 14,00 x 1,78 |
| XSDOM NW 08 HS    | S      | PN 400          | 12        | M 18 x 1,5 | 23,0     | 12,0   | 39,5    | 18,5    | 20,0    | 27,5    | 30      | 27 | 18,77 x 1,78 |
| XSDOM NW 10 HS    | S      | PN 400          | 14        | M 20 x 1,5 | 25,0     | 14,0   | 43,5    | 20,0    | 22,5    | 30,5    | 32      | 30 | 18,77 x 1,78 |
| XSDOM NW 13 HS    | S      | PN 315          | 16        | M 22 x 1,5 | 27,0     | 14,0   | 45,0    | 21,5    | 22,0    | 30,5    | 32      | 30 | 18,77 x 1,78 |
| XSDOM NW 16 HS    | S      | PN 315          | 20        | M 27 x 2   | 32,0     | 16,0   | 53,0    | 24,0    | 26,5    | 37,0    | 41      | 36 | 23,81 x 2,62 |
| XSDOM NW 20 HS    | S      | PN 250          | 25        | M 33 x 2   | 39,0     | 18,0   | 66,0    | 30,5    | 31,5    | 43,5    | 50      | 46 | 29,82 x 2,62 |
| XSDOM NW 25 HS    | S      | PN 160          | 30        | M 42 x 2   | 49,0     | 20,0   | 76,0    | 35,5    | 37,0    | 50,5    | 60      | 55 | 37,77 x 2,62 |
| XSDOM NW 32 HS    | S      | PN 160          | 38        | M 48 x 2   | 55,0     | 22,0   | 87,0    | 40,5    | 41,5    | 57,5    | 70      | 60 | 41,28 x 3,53 |

PN = nazivni tlak PB = maks. radni tlak - Seriya: LL = veoma lagan L = lagan S = težak - Ø = vanjski promjer cijevi

### Varijante proizvoda

|                 |  |
|-----------------|--|
| <b>XSDOM VA</b> | Zakretni vijčani spoj, bez prigušivanja, W90°, Oplemenjeni čelik |
| <b>SDOM</b>     | Zakretni vijčani spoj, bez prigušivanja, W90°, Čelik             |