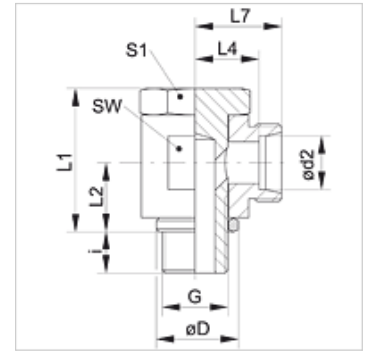


### Karakteristike

<b>Priključak 1</b>	BSP vanjski navoj, cilindrični
<b>Oblik brtve 1</b>	Četvrtasti brtveni prsten
<b>Priključak 2</b>	metrički vanjski navoji, cilindrični
<b>Oblik brtve 2</b>	24° unutarnji konus
<b>Izvedba</b>	Zakretni vijčani spojevi, bez prigušivanja
<b>Oblik izrade</b>	Kutevi 90°
<b>Norma</b>	DIN 2353 ISO 8434-1
<b>Opseg isporuke</b>	Nastavak (bez pretorne matice i nareznog prstena)
<b>Materijal</b>	Čelik
<b>Površinska zaštita</b>	galvanski premaz



### Napomena

Upute za montažu, ugradnju, tlačno opterećenje i dopuštene radne temperature pronaći ćete u tehničkim informacijama za vijčane spojeve cijevi.

### Artikli

Naziv	Seriya	Radni tlak bari	Ø d2 (mm)	G	Ø D (mm)	i (mm)	L1 (mm)	L2 (mm)	L4 (mm)	L7 (mm)	SW (mm)	S1
XSDR NW 04 HL	L	PN 250	6	G 1/8" - 28	14	8	24	10,5	12,0	19,0	17	17
XSDR NW 04 HL 1/4	L	PN 250	6	G 1/4" - 19	18	12	30	14,0	14,5	21,5	22	19
XSDR NW 06 HL	L	PN 250	8	G 1/4" - 19	18	12	30	14,0	14,5	21,5	22	19
XSDR NW 08 HL	L	PN 250	10	G 1/4" - 19	18	12	30	14,0	15,5	22,5	22	19
XSDR NW 10 HL 1/4	L	PN 250	12	G 1/4" - 19	22	12	30	14,0	15,5	22,5	22	19
XSDR NW 10 HL	L	PN 250	12	G 3/8" - 19	22	12	36	16,5	18,0	25,0	27	24
XSDR NW 10 HL 1/2	L	PN 250	12	G 1/2" - 14	26	14	45	21,5	20,5	28,5	32	30
XSDR NW 13 HL	L	PN 250	15	G 1/2" - 14	26	14	45	21,5	21,5	28,5	32	30
XSDR NW 16 HL	L	PN 250	18	G 1/2" - 14	26	14	45	21,5	21,0	28,5	32	30
XSDR NW 20 HL	L	PN 160	22	G 3/4" - 14	32	16	53	24,0	27,5	35,0	41	36
XSDR NW 25 HL	L	PN 160	28	G 1" - 11	39	18	66	30,5	32,0	39,5	50	46
XSDR NW 32 HL	L	PN 160	35	G 1,1/4" - 11	49	20	76	35,5	36,0	46,5	60	55
XSDR NW 40 HL	L	PN 160	42	G 1,1/2" - 11	55	22	87	40,5	40,5	51,5	70	60
XSDR NW 03 HS	S	PN 315	6	G 1/4" - 19	18	12	30	14,0	16,5	23,5	22	19
XSDR NW 04 HS	S	PN 315	8	G 1/4" - 19	18	12	30	14,0	16,5	23,5	22	19
XSDR NW 06 HS	S	PN 315	10	G 3/8" - 19	22	12	36	16,5	18,5	26,0	27	24
XSDR NW 08 HS	S	PN 315	12	G 3/8" - 19	22	12	36	16,5	18,5	26,0	27	24
XSDR NW 10 HS	S	PN 315	14	G 1/2" - 14	26	14	45	21,5	22,5	30,5	32	30
XSDR NW 13 HS	S	PN 315	16	G 1/2" - 14	26	14	45	21,5	22,0	30,5	32	30
XSDR NW 16 HS	S	PN 160	20	G 3/4" - 14	32	16	53	24,0	26,5	37,0	41	36
XSDR NW 20 HS	S	PN 160	25	G 1" - 11	39	18	66	30,5	31,5	43,5	50	46
XSDR NW 25 HS	S	PN 160	30	G 1,1/4" - 11	49	20	76	35,5	37,0	50,5	60	55
XSDR NW 32 HS	S	PN 160	38	G 1,1/2" - 11	55	22	87	40,5	41,5	57,5	70	60

Seriya: LL = veoma lagan L = lagan S = težak - PN = nazivni tlak PB = maks. radni tlak - Ø = vanjski promjer cijevi

### Varijante proizvoda

<b>XSDR VA</b>	Zakretni vijčani spoj, bez prigušivanja, W90°, Oplemenjeni čelik
<b>SDR</b>	Zakretni vijčani spoj, bez prigušivanja, W90°, Čelik