

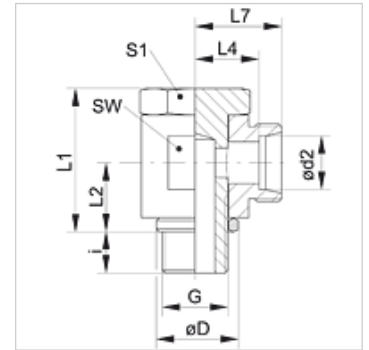
XSWR VA

Zakretni vijčani spoj, kut 90°

HANSA FLEX

Karakteristike

| | |
|-----------------------|--|
| Priključak 1 | BSP vanjski navoj, cilindrični |
| Oblik brtve 1 | Četvrtasti brtveni prsten |
| Priključak 2 | metrički vanjski navoji, cilindrični |
| Oblik brtve 2 | 24° unutarnji konus |
| Izvedba | Zakretni vijčani spoj |
| Oblik izrade | Kutevi 90° |
| Norma | DIN 2353 ISO 8434-1 |
| Opseg isporuke | Nastavak (bez preturane matice i nareznog prstena) |
| Materijal | Oplemenjeni čelik |



Napomena

Upute za montažu, ugradnju, tlačno opterećenje i dopuštene radne temperature pronaći ćete u tehničkim informacijama za vijčane spojeve cijevi.

Artikli

| Naziv | Serijska | Radni tlak bari | Ø d2 (mm) | G | Ø D (mm) | i (mm) | L1 (mm) | L2 (mm) | L4 (mm) | L7 (mm) | SW (mm) | S1 |
|------------------|----------|-----------------|-----------|-------------|----------|--------|---------|---------|---------|---------|---------|----|
| XSWR NW 04 HL VA | L | PN 250 | 6 | G 1/8" - 28 | 14,5 | 6 | 21,0 | 10,0 | 10,5 | 17,5 | 14 | 14 |
| XSWR NW 06 HL VA | L | PN 250 | 8 | G 1/4" - 19 | 18,5 | 9 | 27,0 | 13,0 | 13,0 | 20,0 | 19 | 19 |
| XSWR NW 08 HL VA | L | PN 250 | 10 | G 1/4" - 19 | 18,5 | 9 | 27,0 | 13,0 | 14,0 | 21,0 | 19 | 19 |
| XSWR NW 10 HL VA | L | PN 250 | 12 | G 3/8" - 19 | 22,5 | 9 | 32,0 | 15,0 | 15,5 | 22,5 | 22 | 22 |
| XSWR NW 13 HL VA | L | PN 250 | 15 | G 1/2" - 14 | 26,5 | 11 | 37,5 | 18,0 | 19,0 | 26,0 | 27 | 27 |
| XSWR NW 16 HL VA | L | PN 160 | 18 | G 1/2" - 14 | 26,0 | 11 | 44,0 | 21,5 | 20,5 | 28,0 | 30 | 27 |
| XSWR NW 20 HL VA | L | PN 160 | 22 | G 3/4" - 14 | 32,0 | 13 | 49,0 | 24,0 | 25,5 | 33,0 | 36 | 32 |
| XSWR NW 03 HS VA | S | PN 250 | 6 | G 1/4" - 19 | 18,5 | 9 | 27,0 | 13,0 | 15,0 | 22,0 | 19 | 19 |
| XSWR NW 04 HS VA | S | PN 250 | 8 | G 1/4" - 19 | 18,5 | 9 | 27,0 | 13,0 | 15,0 | 22,0 | 19 | 19 |
| XSWR NW 06 HS VA | S | PN 250 | 10 | G 3/8" - 19 | 22,5 | 9 | 32,0 | 15,0 | 16,0 | 23,5 | 22 | 22 |
| XSWR NW 08 HS VA | S | PN 250 | 12 | G 3/8" - 19 | 22,5 | 9 | 37,0 | 18,0 | 17,0 | 24,5 | 24 | 24 |
| XSWR NW 10 HS VA | S | PN 250 | 14 | G 1/2" - 14 | 26,5 | 11 | 37,0 | 18,0 | 20,0 | 28,0 | 27 | 27 |
| XSWR NW 13 HS VA | S | PN 250 | 16 | G 1/2" - 14 | 26,0 | 11 | 44,0 | 21,5 | 21,5 | 30,0 | 30 | 27 |
| XSWR NW 16 HS VA | S | PN 250 | 20 | G 3/4" - 14 | 32,0 | 13 | 49,0 | 24,0 | 24,5 | 35,0 | 36 | 32 |

Serijska: LL = veoma lagan L = lagan S = težak - PN = nazivni tlak PB = maks. radni tlak - Ø d2 = vanjski promjer cijevi

Varijante proizvoda

| | |
|---------------|---|
| XSWR | Zakretni vijčani spoj, kut 90°, Čelik |
| SWR VA | Zakretni vijčani spoj, kut 90°, Oplemenjeni čelik |