

# G HN IN VA

Spojni nastavci

**HANSA FLEX**

## Karakteristike

**Priključak 1** NPT vanjski navoji

**Oblik brtve 1** brtvljenje navoja

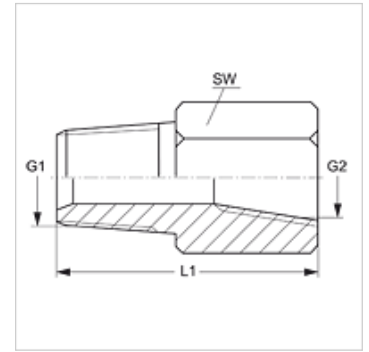
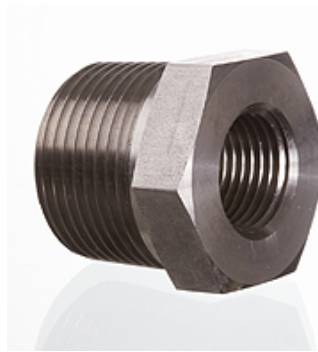
**Priključak 2** NPT unutarnji navoj

**Oblik brtve 2** brtvljenje navoja

**Izvedba** Spojni nastavci

**Oblik izrade** ravno

**Materijal** Oplemenjeni čelik



## Artikli

Naziv	G1	G2	SW (mm)
G HN 02 IN VA	1/8" -27 NPT	1/8" -27 NPT	16
G HN 02 IN 04 VA	1/8" -27 NPT	1/4" - 18 NPT	19
G HN 02 IN 08 VA	1/8" -27 NPT	1/2" - 14 NPT	29
G HN 04 IN VA	1/4" - 18 NPT	1/4" - 18 NPT	19
G HN 04 IN 02 VA	1/4" - 18 NPT	1/8" -27 NPT	19
G HN 04 IN 06 VA	1/4" - 18 NPT	3/8" - 18 NPT	22
G HN 04 IN 08 VA	1/4" - 18 NPT	1/2" - 14 NPT	29
G HN 06 IN VA	3/8" - 18 NPT	3/8" - 18 NPT	22
G HN 06 IN 02 VA	3/8" - 18 NPT	1/8" -27 NPT	22
G HN 06 IN 04 VA	3/8" - 18 NPT	1/4" - 18 NPT	19
G HN 06 IN 08 VA	3/8" - 18 NPT	1/2" - 14 NPT	29
G HN 08 IN 02 VA	1/2" - 14 NPT	1/8" -27 NPT	29
G HN 08 IN 12 VA	1/2" - 14 NPT	3/4" - 14 NPT	35
G HN 08 IN 04 VA	1/2" - 14 NPT	1/4" - 18 NPT	29
G HN 08 IN 06 VA	1/2" - 14 NPT	3/8" - 18 NPT	29
G HN 12 IN 04 VA	3/4" - 14 NPT	1/4" - 18 NPT	35
G HN 12 IN 06 VA	3/4" - 14 NPT	3/8" - 18 NPT	35
G HN 12 IN 08 VA	3/4" - 14 NPT	1/2" - 14 NPT	35
G HN 16 IN 08 VA	1" -11,5 NPT	1/2" - 14 NPT	42
G HN 16 IN 12 VA	1" -11,5 NPT	3/4" - 14 NPT	42

SW = širina ključa

## Varijante proizvoda

**G HN IN** Spojni nastavci, Čelik