

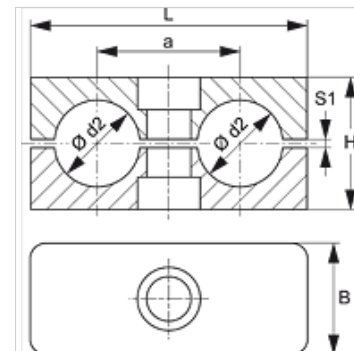
# SRS 1-5 D PP G

Obujmica cijevi, dvostruke cijevi

**HANSA FLEX**

## Karakteristike

|                     |                                    |
|---------------------|------------------------------------|
| Izvedba             | Dvostruka cijevna obujmica         |
| Dodatak kod izvedbe | Unutrašnja strana obujmice, glatka |
| Norma               | DIN 3015-3                         |
| Temperatura min.    | -30 °C                             |
| Temperatura max.    | 90 °C                              |
| Materijal           | Polipropilen                       |



## Napomena

Za držač crijeva i kabela preporučuje se uporaba obujmica s glatkom unutrašnjom površinom. Montaža će zatim uslijediti bez prednaprezanja čim se smanjuje visina bloka H za mjeru proreza S1.

## Napomene uz narudžbu

1 komad = 2 polovice obujmice

## Artikli

| Naziv            | Veličina obujmice | Vanjski Ø cijevi d2 (mm) | Vanjski Ø cijevi d2 | a (mm) | B (mm) | H (mm) | L (mm) | S1 (mm) |
|------------------|-------------------|--------------------------|---------------------|--------|--------|--------|--------|---------|
| SRS 106 D PP G   | 1                 | 6,0                      | -                   | 20     | 30     | 27     | 36     | 1,0     |
| SRS 106.4 D PP G | 1                 | 6,4                      | 1/4"                | 20     | 30     | 27     | 36     | 1,0     |
| SRS 108 D PP G   | 1                 | 8,0                      | 5/16"               | 20     | 30     | 27     | 36     | 1,0     |
| SRS 109.5 D PP G | 1                 | 9,5                      | 3/8"                | 20     | 30     | 27     | 36     | 1,0     |
| SRS 110 D PP G   | 1                 | 10,0                     | -                   | 20     | 30     | 27     | 36     | 1,0     |
| SRS 112 D PP G   | 1                 | 12,0                     | -                   | 20     | 30     | 27     | 36     | 1,0     |
| SRS 212.7 D PP G | 2                 | 12,7                     | 1/2"                | 29     | 30     | 26     | 53     | 1,2     |
| SRS 213.5 D PP G | 2                 | 13,5                     | -                   | 29     | 30     | 26     | 53     | 1,2     |
| SRS 214 D PP G   | 2                 | 14,0                     | -                   | 29     | 30     | 26     | 53     | 1,2     |
| SRS 215 D PP G   | 2                 | 15,0                     | -                   | 29     | 30     | 26     | 53     | 1,2     |
| SRS 216 D PP G   | 2                 | 16,0                     | 5/8"                | 29     | 30     | 26     | 53     | 1,2     |
| SRS 217.2 D PPG  | 2                 | 17,2                     | -                   | 29     | 30     | 26     | 53     | 1,2     |
| SRS 218 D PP G   | 2                 | 18,0                     | -                   | 29     | 30     | 26     | 53     | 1,2     |
| SRS 319 D PP G   | 3                 | 19,0                     | 3/4"                | 36     | 30     | 37     | 67     | 1,6     |
| SRS 320 D PP G   | 3                 | 20,0                     | -                   | 36     | 30     | 37     | 67     | 1,6     |
| SRS 321.3 D PP G | 3                 | 21,3                     | -                   | 36     | 30     | 37     | 67     | 1,6     |
| SRS 322 D PP G   | 3                 | 22,0                     | -                   | 36     | 30     | 37     | 67     | 1,6     |
| SRS 325 D PP G   | 3                 | 25,0                     | 1"                  | 36     | 30     | 37     | 67     | 1,6     |
| SRS 426.9 D PP G | 4                 | 26,9                     | -                   | 45     | 30     | 42     | 82     | 2,0     |
| SRS 428 D PP G   | 4                 | 28,0                     | -                   | 45     | 30     | 42     | 82     | 2,0     |
| SRS 430 D PP G   | 4                 | 30,0                     | -                   | 45     | 30     | 42     | 82     | 2,0     |
| SRS 532 D PP G   | 5                 | 32,0                     | 1.1/4"              | 56     | 30     | 54     | 106    | 2,0     |
| SRS 533.7 D PP G | 5                 | 33,7                     | -                   | 56     | 30     | 54     | 106    | 2,0     |
| SRS 535 D PP G   | 5                 | 35,0                     | -                   | 56     | 30     | 54     | 106    | 2,0     |
| SRS 538 D PP G   | 5                 | 38,0                     | 1.1/2"              | 56     | 30     | 54     | 106    | 2,0     |
| SRS 542 D PP G   | 5                 | 42,0                     | -                   | 56     | 30     | 54     | 106    | 2,0     |

## Varijante proizvoda

|              |   |
|--------------|---|
| SRS 1-5 D PA | Obujmica cijevi, dvostruke cijevi, Unutrašnja strana obujmice s rebrima |
| SRS 1-5 D PP | Obujmica cijevi, dvostruke cijevi, Unutrašnja strana obujmice s rebrima |
| SRS 1-5 D VG | Obujmica cijevi, dvostruke cijevi, Unutrašnja strana obujmice, glatka   |