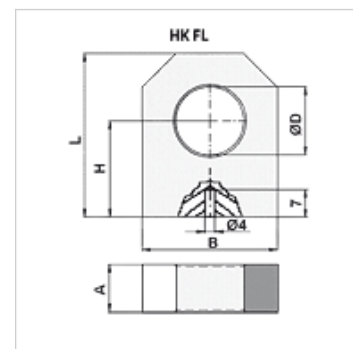


HK FL

Zakretni ležaj FL

Karakteristike

Materijal Čelik S355J0 (Fe510C)



Artikli

| Naziv | A (mm) | B (mm) | H (mm) | L (mm) | Ø D (mm) | Težina (kg) |
|----------|-----------|-----------|-----------|-----------|-------------|----------------|
| HK FL 16 | 15,0 | 35,0 | 34,0 | 50,0 | 16,20 | 0,19 |
| HK FL 20 | 20,0 | 40,0 | 40,0 | 60,0 | 20,25 | 0,38 |
| HK FL 25 | 25,0 | 50,0 | 45,0 | 65,0 | 25,25 | 0,58 |
| HK FL 30 | 30,0 | 60,0 | 50,0 | 75,0 | 30,25 | 0,79 |
| HK FL 35 | 35,0 | 70,0 | 55,0 | 85,0 | 35,25 | 0,98 |
| HK FL 40 | 40,0 | 80,0 | 60,0 | 100,0 | 40,25 | 1,22 |