

HK SPIDEX Z

Spojka Spidex za zupčaste pumpe

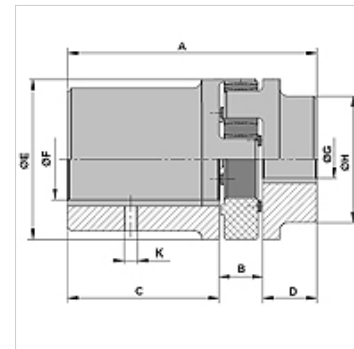
HANSA FLEX

Karakteristike

Izvedba može se kombinirati s nosačem pumpe HK PT

Materijal aluminij

Primjena za zupčaste pumpe BG 0 do BG 3



Opis

Okretan, elastičan, prigušuje vibracije, nije potrebno održavanje

Artikli

Naziv	A (mm)	B (mm)	C (mm)	D (mm)	K	Ø E (mm)	Ø F (mm)	Ø G (mm)	Ø H (mm)	Motor	Crpka	Težina (kg)
HK A1914 714 184 AL	55,00	16	25,0	14,0	M5	40	14	7,00	32	BG71	BG0 / vratilo cil.	0,12
HK A1914 N1 AL	58,00	16	25,0	17,0	M5	40	14	9,75	32	BG71	BG1 / vratilo 1:8	0,12
HK A1919 714 184 AL	55,00	16	25,0	14,0	M5	40	19	7,00	32	BG80	BG0 / vratilo cil.	0,16
HK A1919 N1 AL	58,00	16	25,0	17,0	M5	40	19	9,75	32	BG80	BG1 / vratilo 1:8	0,16
HK A2419 N2A AL	72,00	16	30,0	24,0	M5	55	19	17,28	40	BG80	BG2 / vratilo 1:8	0,34
HK A2419 7 B17 AL	66,50	18	30,0	18,5	M5	55	19	17,40	40	BG80	BG2 / vratilo 1:5	0,25
HK A1924 24 N1 AL	58,00	16	25,0	17,0	M5	40	24	9,75	32	BG90	BG1 / vratilo 1:8	0,34
HK A2424 N2A AL	72,00	18	30,0	24,0	M5	55	24	17,28	40	BG90	BG2 / vratilo 1:8	0,34
HK A2424 7 B17 AL	65,00	18	30,0	18,5	M5	55	24	17,40	40	BG90	BG2 / vratilo 1:5	0,25
HK A2432 28 60 N1 AL	95,00	18	60,0	17,0	M5	55	28	9,75	40	BG100/112	BG1 / vratilo 1:8	0,45
HK A2432 28 N2A AL	72,00	18	30,0	24,0	M5	55	28	17,28	52	BG100/112	BG2 / vratilo 1:8	0,45
HK A2432 28 7 B17 AL	66,50	18	30,0	18,5	M5	55	28	17,40	40	BG100/112	BG2 / vratilo 1:5	0,27
HK A2432 28 N3 AL	76,00	18	30,0	28,0	M5	55	28	22,00	52	BG100/112	BG3 / vratilo 1:8	0,45
HK A2838 38 60 N2A AL	104,00	20	60,0	24,0	M6	65	38	17,28	48	BG132	BG2 / vratilo 1:8	0,90
HK A2838 38 7 B17 AL	73,50	20	35,0	18,5	M6	65	38	17,40	48	BG132	BG2 / vratilo 1:5	0,30
HK A2838 38 60 N3 AL	108,00	20	60,0	28,0	M6	65	38	22,00	62	BG132	BG3 / vratilo 1:8	0,95
HK A3845 42 N2A AL	93,00	24	45,0	24,0	M8	80	42	17,28	77	BG160	BG2 / vratilo 1:8	1,60
HK A3845 42 7 B17 AL	112,50	24	70,0	18,5	M8	80	42	17,40	66	BG160	BG2 / vratilo 1:5	0,68
HK A3845 42 N3 AL	97,00	24	45,0	28,0	M8	80	42	22,00	77	BG160	BG3 / vratilo 1:8	1,60

Rezervni dijelovi

HK ZK Zupčasti vijenac za spojku

Dodatni elementi

HK MPK Tablica odabira kombinacije motor-pumpa za zupčaste pumpe