

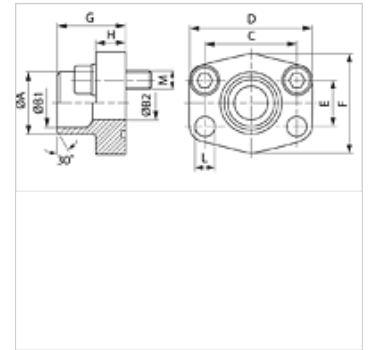
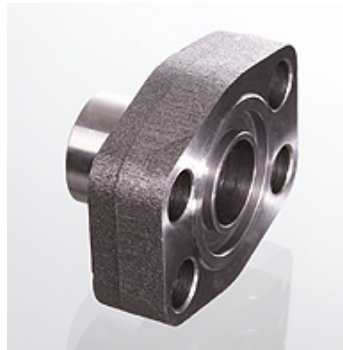
AFS SRE (6000 PSI)

SAE vijenci za navarivanje

HANSA FLEX

Karakteristike

Tlačni niz	6000 psi
Norma	SAE J 518 C ISO 6162
Oblik izrade	ravno
Izvedba	SAE vijenci za navarivanje
Pričvršćenje	vijčani provrt
Opseg isporuke	samo priрубnica
Materijal	S355J2G3 (ST52.3)
Površinska zaštita	crno nauljeno



Napomena

Navedeni maksimalni radni tlak odnosi se na priрубnicu! Stvarni radni tlak određuje cijev (debljina stjenke) i kvaliteta cijevi!

Preporučeni vijci navedeni su u stupcu M (metr) ili M (unc).

Artikli

Naziv	PB 10.9 (bar)	Veličina	Cijev	A (mm)	B1 (mm)	B2 (mm)	G (mm)	C (mm)	E (mm)	H (mm)	L (mm)	M metr.	M unc
AFS 401 SRE 20	400	1/2"	20 x 3	20	14,0	14	34,0	40,5	18,2	16,0	9,0	M 8 x 30	5/16" x 1.1/4"
AFS 402 SRE 20	400	3/4"	20 x 3	20	14,0	14	35,0	50,8	23,8	21,0	11,0	M 10 x 35	3/8" x 1.1/2"
AFS 402 SRE 25	400	3/4"	25 x 4	25	17,0	17	35,0	50,8	23,8	21,0	11,0	M 10 x 35	3/8" x 1.1/2"
AFS 403 SRE 25	400	1"	25 x 4	25	17,0	17	42,0	57,2	27,8	25,0	13,0	M 12 x 45	7/16" x 1.1/2"
AFS 403 SRE 30	400	1"	30 x 4	30	22,0	22	42,0	57,2	27,8	25,0	13,0	M 12 x 45	7/16" x 1.1/2"
AFS 404 SRE 30	400	1.1/4"	30 x 4	30	22,0	22	44,0	66,7	31,8	25,0	15,0	M 14 x 50	1/2" x 1.3/4"
AFS 404 SRE 38	400	1.1/4"	38 x 6	38	26,0	26	44,0	66,7	31,8	25,0	15,0	M 14 x 50	1/2" x 1.3/4"
AFS 405 SRE 38	400	1.1/2"	38 x 6	38	26,0	26	56,0	49,4	36,5	28,0	17,0	M 16 x 50	5/8" x 2"
AFS 405 SRE 48	400	1.1/2"	48,3 x 8	49	32,0	32	56,0	79,4	36,5	28,0	17,0	M 16 x 50	5/8" x 2"
AFS 405 SRE 60	400	1.1/2"	60,3 x 10	61	40,0	40	56,0	79,4	36,5	27,0	17,0	M 16 x 50	5/8" x 2"
AFS 406 SRE 60	400	2"	60,3 x 10	61	40,0	40	65,0	96,8	44,5	37,0	21,0	M 20 x 70	3/4" x 2.1/2"
AFS 406 SRE 76	400	2"	76,1 x 12,5	76	50,0	48	80,0	96,8	44,5	33,0	21,0	M 20 x 65	3/4" x 2.1/2"

PN = nazivni tlak PB = maks. radni tlak

Varijante proizvoda

AFS SRE M (3000 / 6000 PSI) SAE vijenci za navarivanje, s kompletom metričkih vijaka i O prstenom

AFS SRE U (3000 / 6000 PSI) SAE vijenci za navarivanje, s UNC kompletom vijaka i O prstenom