

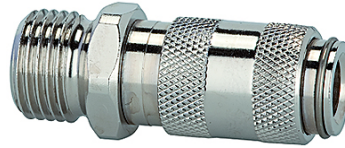
K-SVKM NW 2,7 AG MS NI

Quick disconnect couplings DN 2.7, nickel-plated brass, male

HANSA FLEX

Karakteristike

Radni tlak	0 - 35 bar, maximum static working pressure (non-pulsating)
Protok zraka	165 l/min (at 6 bar and $\Delta p = 0.5$ bar)
Temperatura medija	-20 °C to +100 °C
Kućište, čahura, tijelo ventila	Nickel-plated brass
Opruga, razorni prsten, kugle	stain less steel
Brtnveni materijal	NBR



Napomena

Drugi podatci na zahtjev.

Opis

One-hand quick disconnect coupling, one side sealing, extremely compact, with a large bore and a small pressure drop. Ideal for: Medical & Dental equipment, instrumentation and control, laboratory equipment, chemical applications, small tools, analysis, miniature pneumatics, engineering.

Artikli

Naziv	Priključak	Duljina (mm)	SW (mm)
K- 07 35 06 18	M 5 male	26,0	9
K- 07 35 06 19	G 1/8 male	28,0	11