

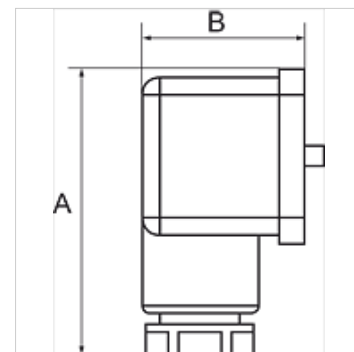
# K-DRS ELK GERAETESTECKER VAKUUM

Pressure switches, connection with plug connector, type A acc. to DIN 43650

**HANSA FLEX**

## Karakteristike

Područje primjene	Pneumatic applications
Učestalost uklapanja	200/min.
Uklopni napon	max. 250 V AC / 28 V DC
Područje namještanja	-0.85 / +1 bar
Vrsta zaštite	IP 65 (DIN 43650), IP 67 (M 12 x 1)
Temperaturno područje	-10 °C to +80 °C
Čep za namještanje	Aluminium, powder-coated
Kućište	Special die-cast material
Membrana, brtva	Perbunan



## Napomena

Drugi podatci na zahtjev.

## Opis

For converting pneumatic to electrical signals. Designed for use in rough vacuum applications (technical vacuum). Universal switch type, suitable as NC, NO or changeover contact. These devices are free from paint-wetting impairment substances (PWIS).

## Artikli

Naziv	Priključak	A (mm)	B (mm)
K- 07 30 28 51	Prirubnica	48,0	28,0
K- 07 30 28 53	G 1/4	48,0	28,0