

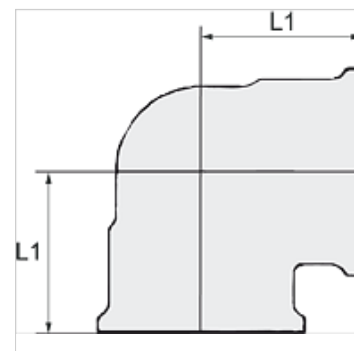
K-W90 STUECK IG IG RP-GEW

90° elbows, female-female, Rp thread acc. to ISO 7-1

HANSA FLEX

Karakteristike

Radni tlak	maks. 20 bar
Radna temperatura	Max. 175 °C
Unutarnji navoj	Rp-thread acc. ISO 7-1
Materijal	Stainless steel 1.4401 / 1.4408



Napomena

Drugi podatci na zahtjev.

Artikli

Naziv	Navoj	L1 (mm)
K- 07 40 10 30	Rp 1/8	16,4
K- 07 40 10 31	Rp 1/4	19,2
K- 07 40 10 32	Rp 3/8	22,5
K- 07 40 10 39	Rp 1/2	27,4
K- 07 40 10 40	Rp 3/4	31,1
K- 07 40 10 41	Rp 1	36,9