

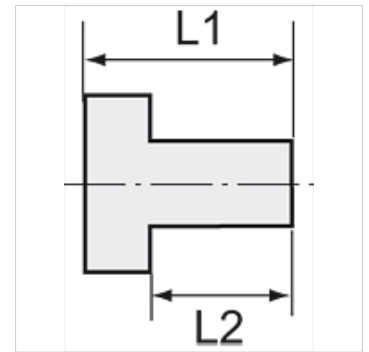
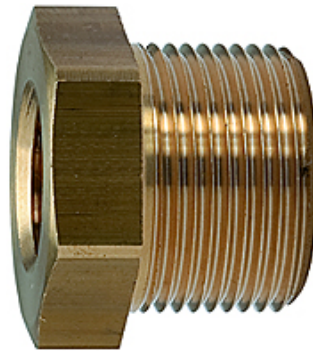
K-RD NIPPEL KURZ 1

Reducing nipples, short type

HANSA FLEX

Karakteristike

Radni tlak	10 bar
Temperatura medija	max. +90 °C
Okolna temperatura	Max. +90 °C
Materijal	Brass with a bare metal surface



Napomena

The dimensions of the standard screw fittings may change slightly during the life of the catalogue as a result of optimisation processes.

Drugi podatki na zahtjev.

Artikli

Naziv	Vanjski navoj	Unutarnji navoj	L1 (mm)	L2 (mm)	SW (veličina ključa)
K- 07 35 11 21	M 14 x 1.5	M 10 x 1	11,0	7,0	17 mm
K- 07 35 11 22	M 24 x 1.5	M 16 x 1.5	24,0	16,0	27 mm
K- 07 40 00 48	G 1/8	M 5	11,0	7,0	14 mm
K- 07 40 00 49	G 1/4	M 5	14,0	10,0	17 mm
K- 07 40 00 50	G 1/4	G 1/8	13,0	8,0	17 mm
K- 07 40 00 53	G 3/8	G 1/8	13,0	9,5	19 mm
K- 07 40 40 83	G 3/8	G 1/4	13,0	9,5	19 mm
K- 07 40 00 55	G 1/2	G 1/8	18,0	12,0	24 mm
K- 07 40 00 54	G 1/2	G 1/4	15,5	11,5	22 mm
K- 07 40 00 51	G 1/2	G 3/8	15,5	11,5	22 mm
K- 07 40 44 30	G 3/4	G 1/4	18,0	12,0	27 mm
K- 07 40 00 56	G 3/4	G 3/8	18,0	12,0	32 mm
K- 07 40 00 52	G 3/4	G 1/2	21,0	14,0	32 mm
K- 07 40 00 57	G 1	G 1/2	24,0	16,0	36 mm
K- 07 40 40 84	G 1	G 3/4	18,0	12,0	36 mm
K- 07 40 44 31	G 1 1/4	G 3/4	23,0	16,0	42 mm
K- 07 40 00 58	G 1 1/4	G 1	24,0	16,0	42 mm
K- 07 40 44 32	G 1 1/2	G 3/4	24,0	16,0	50 mm
K- 07 40 00 59	G 1 1/2	G 1	24,0	16,0	48 mm
K- 07 40 00 60	G 1 1/2	G 1 1/4	21,0	15,0	50 mm
K- 07 40 00 61	G 2	G 1	28,0	18,0	62 mm
K- 07 40 00 62	G 2	G 1 1/4	26,5	18,0	62 mm
K- 07 40 00 63	G 2	G 1 1/2	30,0	20,0	65 mm