

K-VLST K AG IG MS NI

Extensions, short, parallel - nickel-plated brass

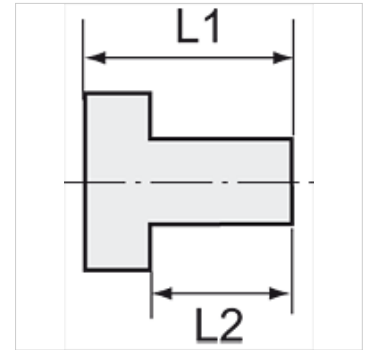
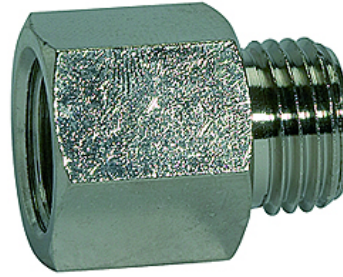
HANSA FLEX

Karakteristike

Radna temperatura Max. 150 °C

Tlak Max. 60 bar

Materijal poniklani mjed



Napomena

The dimensions of the standard screw fittings may change slightly during the life of the catalogue as a result of optimisation processes.

Drugi podatci na zahtjev.

Opis

Suitable for air, water, oil, steam, etc.

Dodatne informacije

Further types and dimensions on request.

Artikli

Naziv	Vanjski navoj	Unutarnji navoj	L1 (mm)	L2 (mm)	SW (veličina ključa)
K- 07 40 39 01	M 5	G 1/8	17,0	4,0	12 mm
K- 07 40 39 02	G 1/8	G 1/8	18,5	6,0	14 mm
K- 07 40 39 03	G 1/8	G 1/4	21,5	6,0	17 mm
K- 07 40 39 04	G 1/4	G 1/4	22,5	8,0	17 mm
K- 07 40 39 05	G 1/4	G 3/8	26,0	8,0	22 mm
K- 07 40 39 06	G 3/8	G 3/8	26,5	9,0	22 mm
K- 07 40 39 07	G 3/8	G 1/2	29,5	9,0	24 mm
K- 07 40 39 08	G 1/2	G 1/2	29,5	10,0	25 mm