

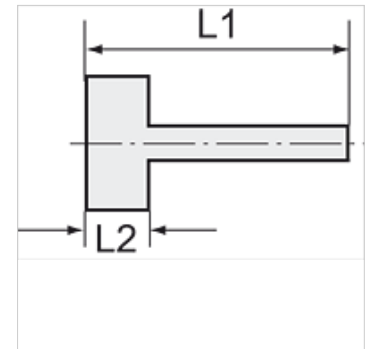
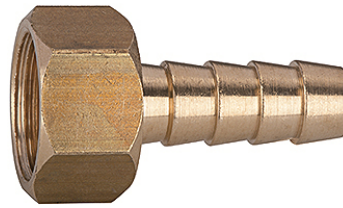
K-TUE IG MS

Female hose fittings with female thread

HANSA FLEX

Karakteristike

Radni tlak	10 bar
Temperatura medija	max. +90 °C
Okolna temperatura	Max. +90 °C
Materijal	Brass with a bare metal surface



Napomena

The dimensions of the standard screw fittings may change slightly during the life of the catalogue as a result of optimisation processes.
Drugi podatci na zahtjev.

Dodatne informacije

Further types and dimensions on request.

Artikli

Naziv	Navoj	za crijevo	L1 (mm)	L2 (mm)	SW (veličina ključa)
K- 07 40 13 88	G 1/8	LW 6 mm	35,0	10,0	12 mm
K- 07 40 13 89	G 1/8	LW 8 mm	35,0	10,0	12 mm
K- 07 40 49 76	G 1/8	LW 9 mm	33,5	10,5	14 mm
K- 07 40 13 90	G 1/4	LW 6 mm	36,0	11,0	15 mm
K- 07 40 13 91	G 1/4	LW 8 mm	36,0	11,0	15 mm
K- 07 40 13 92	G 1/4	LW 10 mm	36,0	11,0	15 mm
K- 07 40 13 93	G 1/4	LW 13 mm	40,5	11,0	15 mm
K- 07 40 49 81	G 1/4	LW 9 mm	35,0	12,0	17 mm
K- 07 40 13 94	G 3/8	LW 6 mm	36,0	11,0	19 mm
K- 07 40 13 95	G 3/8	LW 8 mm	36,0	11,0	19 mm
K- 07 40 13 96	G 3/8	LW 10 mm	36,0	11,0	19 mm
K- 07 40 13 97	G 3/8	LW 13 mm	40,5	11,0	19 mm
K- 07 40 49 82	G 3/8	LW 9 mm	36,0	13,0	19 mm
K- 07 40 13 98	G 1/2	LW 6 mm	39,0	14,5	23 mm
K- 07 40 13 99	G 1/2	LW 8 mm	39,0	14,5	23 mm
K- 07 40 14 00	G 1/2	LW 10 mm	39,0	14,5	23 mm
K- 07 40 14 01	G 1/2	LW 13 mm	44,0	14,5	23 mm
K- 07 40 49 83	G 1/2	LW 9 mm	37,0	14,0	24 mm
K- 07 40 49 84	G 3/4	LW 13 mm	39,5	16,5	30 mm
K- 07 40 49 85	G 3/4	LW 16 mm	39,5	16,5	30 mm
K- 07 40 49 86	G 3/4	LW 19 mm	39,5	16,5	30 mm
K- 07 40 49 87	G 1	LW 19 mm	42,5	19,5	38 mm
K- 07 40 49 88	G 1	LW 25 mm	47,0	19,5	38 mm