

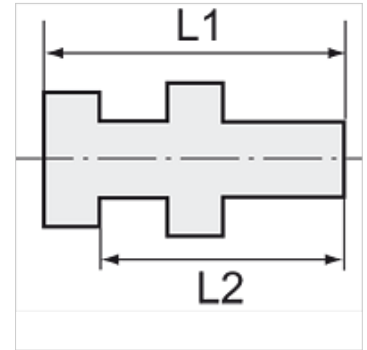
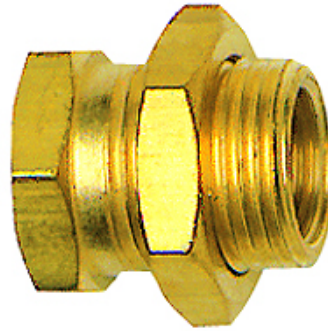
# K-SCHOTTNIPPEL MS

Bulkhead nipples

**HANSA FLEX**

## Karakteristike

|                    |             |
|--------------------|-------------|
| Radni tlak         | 10 bar      |
| Temperatura medija | max. +90 °C |
| Okolna temperatura | Max. +90 °C |
| Materijal          | Mjed        |



## Napomena

The dimensions of the standard screw fittings may change slightly during the life of the catalogue as a result of optimisation processes.  
Drugi podatci na zahtjev.

## Dodatne informacije

Further types and dimensions on request.

## Artikli

| Naziv          | Vanjski navoj | Unutarnji navoj | L1<br>(mm) | L2<br>(mm) | SW1<br>(mm) | SW2<br>(mm) |
|----------------|---------------|-----------------|------------|------------|-------------|-------------|
| K- 07 40 34 31 | G 1/8         | M 5             | 15,0       | 11,5       | 14          | 14          |
| K- 07 40 34 32 | G 1/4         | G 1/8           | 18,0       | 14,0       | 17          | 17          |
| K- 07 40 34 33 | G 3/8         | G 1/4           | 22,0       | 17,0       | 19          | 22          |
| K- 07 40 34 34 | G 1/2         | G 3/8           | 27,0       | 21,0       | 24          | 24          |