

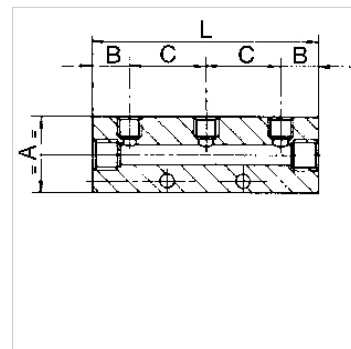
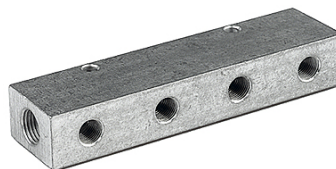
K-VTL

Distributor blocks, outlets on one side (front)

HANSA FLEX

Karakteristike

Pričvršćenje	2 mounting holes in housing (screw size M 5)
Radni tlak	maks. 10 bar
Temperaturno područje	-10 °C to +100 °C
Materijal	aluminij



Napomena

Drugi podatci na zahtjev.

Opis

For easy assembly of compressed air taps (screw fittings, unions, couplings, etc.).
Optionally with 2, 3, 4, or 6 outlets on one side or both sides.

Artikli

Naziv	Priključak izlaza	Priključak ulaza	A (mm)	B (mm)	C (mm)	L (mm)
K- 07 40 40 42	2 x M 5	2 x 1/8	20,0	15,0	15,0	45,0
K- 07 40 53 01	3 x M 5	2 x 1/8	20,0	15,0	15,0	60,0
K- 07 40 40 43	4 x M 5	2 x 1/8	20,0	15,0	15,0	75,0
K- 07 40 40 44	6 x M 5	2 x 1/8	20,0	15,0	15,0	105,0
K- 07 40 40 30	2 x 1/8	2 x 1/4	30,0	15,0	30,0	60,0
K- 07 40 52 91	3 x 1/8	2 x 1/4	30,0	15,0	30,0	90,0
K- 07 40 40 31	4 x 1/8	2 x 1/4	30,0	15,0	30,0	120,0
K- 07 40 40 32	6 x 1/8	2 x 1/4	30,0	15,0	30,0	180,0
K- 07 40 40 33	2 x 1/4	2 x 3/8	40,0	18,0	36,0	72,0
K- 07 40 52 94	3 x 1/4	2 x 3/8	30,0	18,0	36,0	108,0
K- 07 40 40 34	4 x 1/4	2 x 3/8	30,0	18,0	36,0	144,0
K- 07 40 40 35	6 x 1/4	2 x 3/8	30,0	18,0	36,0	216,0
K- 07 40 40 36	2 x 1/8	2 x 3/8	40,0	18,0	30,0	66,0
K- 07 40 52 97	3 x 1/8	2 x 3/8	30,0	18,0	30,0	96,0
K- 07 40 40 37	4 x 1/8	2 x 3/8	30,0	18,0	30,0	126,0
K- 07 40 40 38	6 x 1/8	2 x 3/8	30,0	18,0	30,0	186,0
K- 07 40 40 39	2 x 1/4	2 x 1/2	40,0	22,0	36,0	80,0
K- 07 40 52 98	3 x 1/4	2 x 1/2	40,0	22,0	36,0	116,0
K- 07 40 40 40	4 x 1/4	2 x 1/2	40,0	22,0	36,0	152,0
K- 07 40 40 41	6 x 1/4	2 x 1/2	40,0	22,0	36,0	224,0