

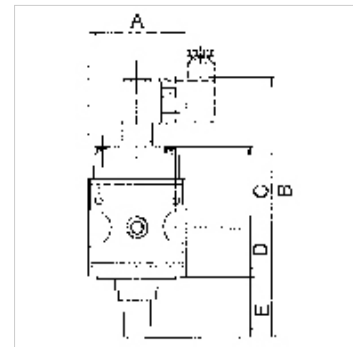
# K-SCHALTVENTILE 3/2 MULTIFIX

On-off valves (3/2-way valves)

**HANSA FLEX**

## Karakteristike

Ulazni tlak	Min. 2 bar, max. 10 bar
Temperatura medija	max. 60 °C
Okolna temperatura	Max. 60 °C
Električni priključak	Device plug PG 9, type B, EN 175301-803
Vrsta zaštite	IP 65 (P 54) acc. to DIN 40050
Trajanje uključanja, relativno	100 %
Odzračni priključak	Silencer G 1/4
Brtveni materijal	NBR
Kućiče	Die-cast zinc
Mjerenje vrijednosti protoka	At P1 = 6 bar and pressure drop $\Delta p = 1$ bar



## Napomena

Drugi podatci na zahtjev.

## Opis

Pneumatic systems or parts of systems can be switched on and off by means of an electrical signal. When they are switched off, the system is relieved at the same time.

## Napomene uz narudžbu

On-off valves are also available in a pneumatically operated version. Please ask for more information.

## Artikli

Naziv	Navoj	Protok (L/min)	Magnetni svitak	A (mm)	B	C (mm)	D (mm)	E (mm)	Veličina
K- 07 25 11 65	G 1/4	900	24 V AC, 50 Hz	47,8	138,7 mm	43,7	26,0	17,5	1
K- 07 25 11 66	G 1/4	900	230 V AC, 50 Hz	47,8	138,7 mm	43,7	26,0	17,5	1
K- 07 25 11 67	G 1/4	900	110 V AC, 50 Hz	47,8	138,7 mm	43,7	26,0	17,5	1
K- 07 25 11 68	G 1/4	900	24 V DC	47,8	138,7 mm	43,7	26,0	17,5	1
K- 07 25 11 69	G 1/2	4000	24 V AC, 50 Hz / 12 V DC	68,8	185,0 mm	56,2	33,5	44,1	2
K- 07 25 11 70	G 1/2	4000	230 V AC, 50 Hz	68,8	185,0 mm	56,2	33,5	44,1	2
K- 07 25 11 71	G 1/2	4000	110 V AC, 50 Hz	68,8	185,0 mm	56,2	33,5	44,1	2
K- 07 25 11 72	G 1/2	4000	24 V DC	68,8	185,0 mm	56,2	33,5	44,1	2

## Pribor

K-SCHALLDAE SINTERBR GE MS1 Silencers, sintered bronze, with brass hexagon nut and brass thread

## Rezervni dijelovi

K-KOPPELPAKET MEHR	Coupling packet
K-KOPPELPAKET SCHMA	Coupling packet
K-GERAETESTECKER	Coupling socket
K-HALTERBAUSATZ MULTIFIX	Holder
K-MAGNETSPULE MULTIFIX	Solenoid
K-WV 3/2 VORSTEU HAND MULTIFIX	3/2-way valve