

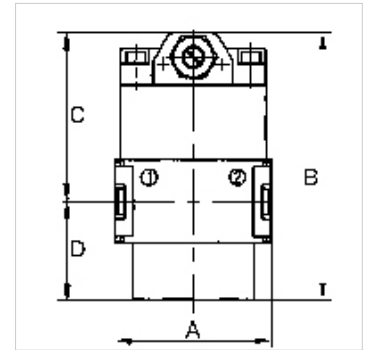
# K-ANFAV MULTIFIX MINI

Start-up valves

**HANSA FLEX**

## Karakteristike

Ulazni tlak	Min. 2.5 bar, max. 16 bar
Temperatura medija	max. 60 °C
Okolna temperatura	Max. 60 °C
Protok	1600 l/min
Brtveni materijal	NBR
Kućište	Die-cast zinc
Mjerenje vrijednosti protoka	At P1 = 6 bar and pressure drop $\Delta p = 1$ bar



## Napomena

If several devices in the »multifix-mini« Series are assembled together, the maximum working pressure is 12 bar.

Drugi podatci na zahtjev.

## Opis

Seat valves operated by secondary pressure for controlled pressurisation of pneumatic systems. The full cross-section of the regulator is opened at 50% of the input pressure. With adjustable restrictor!

## Artikl

Naziv	Navoj	A (mm)	B	C (mm)	D (mm)
K- 07 25 11 53	G 1/4	45,0	77,5 mm	48,5	29,0

## Pribor

K-HALTERBAUSATZ Holder

## Rezervni dijelovi

K-KOPPELPAKET MEHR Coupling packet