

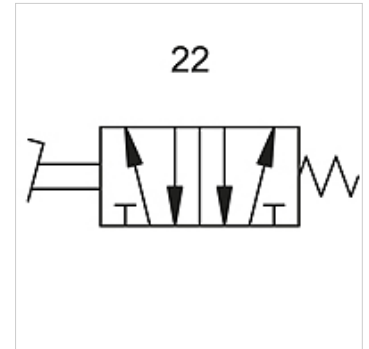
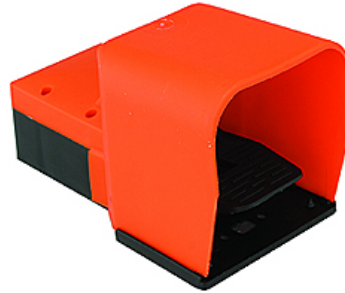
K-WFV 5/2 NICHT RASTEND FUS

5/2-way foot-operated valves (monostable, non-latching, with foot guard)

HANSA FLEX

Karakteristike

Radni tlak	2.5 - 10 bar
Temperaturno područje	-10 °C to +60 °C
Protok pri 6,3 bar i Δ 0,5 bar	60 NI/min (4 mm and M5), 640 NI/min (G 1/4)
Protok pri 6,3 bar i Δ 1 bar	95 NI/min (4 mm and M5), 840 NI/min (G 1/4)



Napomena

Drugi podatci na zahtjev.

Opis

Foot-operated valves, 3/2- and 5/2-way types, bistable or monostable (non-latching).

Artikli

Naziv	Priključak	Br. spojne sheme
K- 07 15 01 91	G 1/4	22