

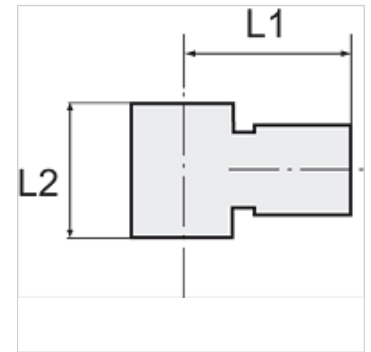
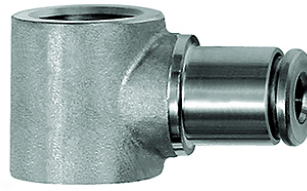
K-L-RINGSTUECK

Ring nipples, single

HANSA FLEX

Karakteristike

Radni tlak, pulsirajući	Max. 10 bar
Tlak	Max. 15 bar (depending on pipe quality)
prikladan materijal za cijevi	PVDF, PTFE, stainless steel, PA, PU
Norma	G thread acc. to DIN EN ISO 228-1
Okolna temperatura	-20 °C to max. +150 °C (depending on pipe quality and diameter)
Materijal	Oplemenjeni čelik 1.4404
Brtnveni materijal	FKM



Napomena

Drugi podatci na zahtjev.

Opis

For use with aggressive media and in areas with corrosive outside influences, in the food processing industry and in hygienic and sanitary applications.

Artikli

Naziv	Navoj	za vanjski Ø crijeva	L1 (mm)	L2 (mm)
K- 07 40 47 10	G 1/8	4 mm	19,5	15,0
K- 07 40 47 11	G 1/8	6 mm	22,0	15,0
K- 07 40 47 12	G 1/8	8 mm	22,5	15,0
K- 07 40 47 08	G 1/4	6 mm	23,5	17,0
K- 07 40 47 09	G 1/4	8 mm	24,0	17,0
K- 07 40 47 07	G 1/4	10 mm	27,0	17,0
K- 07 40 47 13	G 3/8	10 mm	29,0	20,0
K- 07 40 47 14	G 3/8	12 mm	31,0	20,0
K- 07 40 47 06	G 1/2	12 mm	33,0	24,0