

# K-UEM MS NI

Hexagonal swivel nuts - nickel plated brass

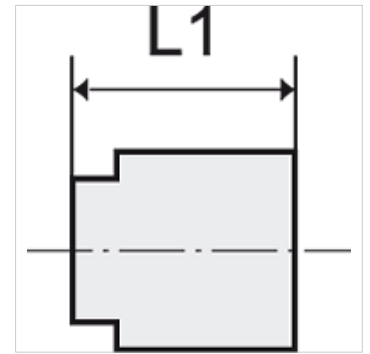
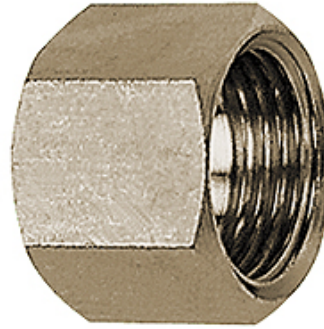
**HANSA FLEX**

## Karakteristike

Radna temperatura Max. 150 °C

Tlak Max. 60 bar

Materijal poniklani mjed



## Napomena

The dimensions of the standard screw fittings may change slightly during the life of the catalogue as a result of optimisation processes.  
Drugi podatci na zahtjev.

## Opis

Suitable for air, water, oil, steam, etc.

## Dodatne informacije

Further types and dimensions on request.

## Artikli

Naziv	Navoj	za veličinu tuljka	L1 (mm)	SW (veličina ključa)
K- 07 40 44 22	G 1/8	I.D. 4, I.D. 6	13,0	14 mm
K- 07 40 44 23	G 1/4	I.D. 4, I.D. 6	15,0	17 mm
K- 07 40 44 24	G 3/8	I.D. 9	15,0	19 mm
K- 07 40 44 25	G 1/2	I.D. 4, I.D. 6, I.D. 9	16,0	24 mm