

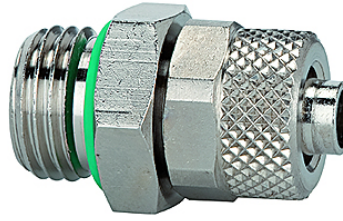
K-XVM ZYL OR FKM

Male connectors, parallel male thread with FPM O-ring

HANSA FLEX

Karakteristike

Radni tlak	Max. 18 bar
Brtni materijal	Buna-N
Materijal	poniklani mjed



Napomena

Drugi podatci na zahtjev.

Artikl

Naziv	Navoj	za crijevo	L1 (mm)	SW (veličina ključa)
K- 07 40 30 83	G 1/8	6 mm / 4 mm	25,0	15 mm
K- 07 40 30 85	G 1/8	8 mm / 6 mm	25,0	15 mm
K- 07 40 30 77	G 1/4	6 mm / 4 mm	27,0	18 mm
K- 07 40 30 79	G 1/4	8 mm / 6 mm	27,0	18 mm
K- 07 40 30 75	G 1/4	10 mm / 8 mm	29,0	18 mm