

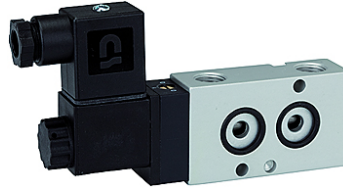
K-WV 3/2 LB NAMUR GETAUSCHT

3/2-way spool valves with NAMUR style interface, NC, ports 1 and 3 or 2 and 3 swapped

HANSA FLEX

Karakteristike

Mediji	Air, neutral gases, filtered
Radni tlak	1.5 to 10 bar
Radna temperatura	-20 °C to +70 °C
Električni priključak	Plug connector PG 9
Sadržano u opsegu isporuke	Plug connector PG 9, 1 coding pin, 2 O-rings, 2 fixing screws
Potrošnja struje	3 W=/5 VA~
Kućište	Aluminium, anodised
Klizač	Stainless steel
Brtnveni materijal	NBR



Napomena

Drugi podatci na zahtjev.

Opis

3/2 and 5/2-way spool valves, monostable, with air purging function and pneumatic spring return. With latching manual operator and optional outgoing air restriction.

Two or three-piece service units with excellent flow rates in modern design.
Lockable diaphragm pressure regulator with secondary ventilation, oil can be filled without interrupting operation.

Artikl

Naziv	Napon	Priključak	DN	Protok (L/min)
K- 07 15 00 05	230 V, 50 Hz	G 1/4	7	1250
K- 07 15 00 06	24 V DC	G 1/4	7	1250