

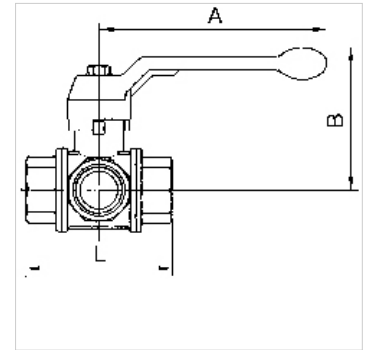
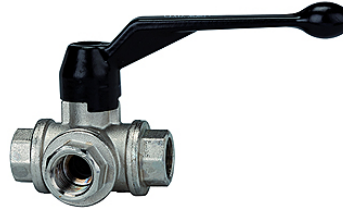
# K-3 BKR T VA LEICHT

3-way ball valves, T-bore, lightweight type

**HANSA FLEX**

## Karakteristike

|                    |                           |
|--------------------|---------------------------|
| Opis navoja        | Rp thread acc. to ISO 7-1 |
| Temperatura medija | -15 °C to max. +100 °C    |
| Brtneni materijal  | PTFE                      |
| Opruga             | Stainless-steel           |
| Kučište i kugla    | Nickel-plated brass       |
| Ručka              | Aluminium, painted black  |



## Napomena

Drugi podatci na zahtjev.

## Opis

Sealing on all sides with T-bore. In contrast to the 1084 series, the lever of this model can only be turned 90° rather than 180°. Only two valve positions are therefore possible instead of four.

## Artikli

| Naziv          | DN | Navoj    | A<br>(mm) | B<br>(mm) | Provrt kugle | L<br>(mm) | maks. radni tlak pri 20°C<br>(bar) |
|----------------|----|----------|-----------|-----------|--------------|-----------|------------------------------------|
| K- 07 30 19 68 | 15 | Rp 1/2   | 130,0     | 85,0      | 13           | 80,0      | 40                                 |
| K- 07 30 19 69 | 20 | Rp 3/4   | 160,0     | 98,0      | 18           | 96,0      | 40                                 |
| K- 07 30 19 70 | 25 | Rp 1     | 160,0     | 102,0     | 23           | 113,0     | 25                                 |
| K- 07 30 19 71 | 32 | Rp 1 1/4 | 195,0     | 121,0     | 29           | 130,0     | 16                                 |
| K- 07 30 19 72 | 40 | Rp 1 1/2 | 195,0     | 125,0     | 35           | 147,0     | 16                                 |
| K- 07 30 19 73 | 50 | Rp 2     | 235,0     | 141,0     | 44           | 169,0     | 16                                 |