

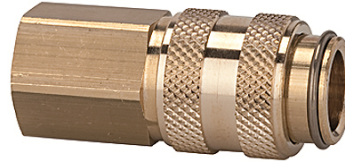
K-SVKM NW 5 ABSP IG MS

Quick disconnect couplings DN 5, both sides sealing, brass, female

HANSA FLEX

Karakteristike

Radni tlak	0 - 35 bar, maximum static working pressure (non-pulsating)
Protok zraka	310 l/min (at 6 bar and $\Delta p = 0.5$ bar)
Temperatura medija	-20 °C to +100 °C
Kućište, čahura, tijelo ventila	Brass
Opruga, razorni prsten, kugle	stain less steel
Brtnveni materijal	NBR



Napomena

Drugi podatci na zahtjev.

Opis

Both the coupling and the self-sealing plug are fitted with a valve. Connection: Both valves open and the medium is allowed to pass. Disconnection: Both valves close and the medium is prevented from escaping.

Artikli

Naziv	Priključak	Duljina (mm)	SW (mm)
K- 07 35 06 75	G 1/8 female	38,0	14
K- 07 35 06 76	G 1/4 female	38,0	17