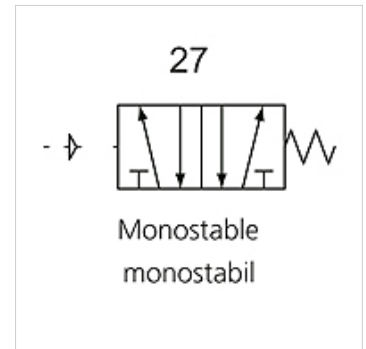
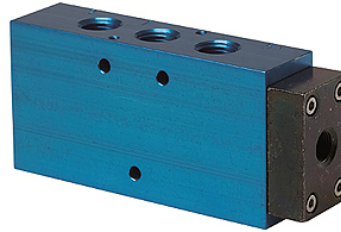


K-WV 5/2 EINS PNEU

5/2-way spool valves, single pneumatic

Karakteristike

Funkcija	5/2-way
Radni tlak	2.5 - 10 bar; Max. vacuum 10 bar (external pilot air)
min. radni tlak	2,5 bar
Temperaturno področje	-10 °C to +60 °C
Protok 6bar i 10bar	1500 NI/min (G 1/4), 4600 NI/min (G 1/2)
Električni priključak	Coupler plug PG 9 - form B
Vrsta zaščite	IP 65 (DIN 46244)
Kućište	Anodised aluminium, blue
Klizlač klipa	Stainless steel
Brtveni materijal	NBR



Napomena

Drugi podatki na zahtjev.

Opis

This valve design, featuring the Tapered Tee Seal®, offers the ability to run without lubrication and supports almost any compressed air quality. The valves are largely resistant to dirt and can thus also be used under extreme conditions without any problems. Leakage is now a thing of the past and the spool no longer sticks, even after long idle periods.

Artiki

Naziv	Priključak	DN	Br. spojne sheme	Upravljanje
K- 07 15 02 17	G 1/4	8	27	
K- 07 15 02 18	G 1/2"	15	27	