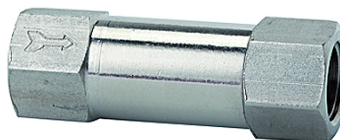


K-RD DURCHGANGSFORM VA

Non-return valves - Straight-way type stainless steel

Karakteristike

Radni tlak	2 - 10 bar
Radna temperatura	-10 °C to +150 °C
Tlak otvaranja	0.2 bar
Opruga	Stainless steel 1.4319
Kućište	Stainless steel 1.4404
O prsten	FKM (FPM)



Napomena

Drugi podatci na zahtjev.

Artikli

Naziv	Navoj	Duljina (mm)	Tlak otvaranja (bar)	SW (mm)
K- 07 30 24 28	G 1/8	40,0	0,2	13
K- 07 30 24 29	G 1/4	48,0	0,2	16