

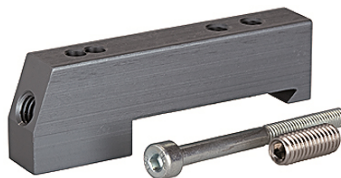
K-ADA HUTPROFIL

Adapter for DIN rail

HANSA FLEX

Karakteristike

Mediji	Filtered, unlubricated or lubricated compressed air. If lubrication is used, it must be continuous.
Radni tlak	Max. vacuum 10 bar (external pilots), 3 to 7 bar (internal pilots as standard)
Upravljački tlak	3 - 7 bar
Temperaturno područje	-10 °C to +60 °C
Protok	200 NI/min (Ø 4), 500 NI/min (Ø 6), 800 NI/min (Ø 8)
Broj aktiviranja	Max. 16 (e.g. 16 spring return valves)
Pomoćno ručno aktiviranje	Latching (bistable), Monostable (non-latching) version also available on request
Potrošnja struje	0.6 W per pilot
Vrsta zaštite	IP 65



Napomena

Drugi podatci na zahtjev.

Opis

These compact valve terminals, with a maximum flow rate of 800 NI/min, can be individually adapted to the specific conditions of each application thanks to the wide range of functions and various input and intermediate plates. Since each valve terminal is a customer-specific combination of a series of individual elements, the catalogue only lists the available input, intermediate and end plates as well as the different valve discs and the 25-pin multi-pole connectors.

Dodatne informacije

Important: The scope of supply does not include a connector. Please order separately.

Artikl

Naziv	Definicija
K- 07 15 22 43	Adapter for DIN rail