

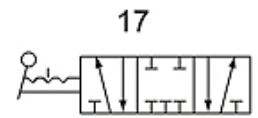
# K-WV 5/3 HANDHEBEL MITTELST 4H

5/3-way valve, operated by hand lever, mid-position closed, latching

**HANSA FLEX**

## Karakteristike

Radni tlak	0 - 8 bar
Temperaturno područje	-20 °C to +70 °C
Mjerenje vrijednosti protoka	At P1 = 8 bar, P2 = 6 bar and pressure drop $\Delta p = 1$ bar
Tijelo ventila	Aluminium alloy



Stable for 5/3,  
mid-position closed  
stabil für 5/3,  
Mitte geschlossen

## Napomena

Drugi podatci na zahtjev.

## Artikli

Naziv	Priključak izlaza	Priključak ulaza	Odzračni priključak	Protok (L/min)	Br. spojne sheme
K- 07 15 04 17	G 1/8	G 1/8	G 1/8	750	17
K- 07 15 04 18	G 1/4	G 1/4	G 1/8	850	17
K- 07 15 04 19	G 1/4	G 1/4	G 1/4	1300	17
K- 07 15 04 20	G 3/8	G 3/8	G 1/4	1500	17