

# K-WV 5/3 ELEKTROPNEU ZENT GESCHL 4V

5/3-way pilot valve, mid-position closed

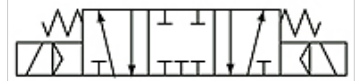
**HANSA FLEX**

## Karakteristike

Radni tlak	1.5 - 8 bar
Temperaturno područje	-20 °C to +70 °C
Mjerenje vrijednosti protoka	At P1 = 8 bar, P2 = 6 bar and pressure drop $\Delta p = 1$ bar
Električni priključak	Connector Type B acc. to ISO 4400
min. radni tlak	1,5 bar
Vrsta zaštite	IP 65
Tijelo ventila	Aluminium alloy



37



Mid-position closed  
Zentrum geschlossen

## Napomena

Drugi podatci na zahtjev.

## Artikli

Naziv	Priključak	Odzračni priključak	Protok (L/min)	Br. spojne sheme	Napon	Veličina
K- 07 15 03 75	M 5	M 5	250	37	24 V DC	100
K- 07 15 03 76	G 1/8	G 1/8	400	37	24 V DC	100
K- 07 15 03 77	G 1/8	G 1/8	550	37	24 V DC	200
K- 07 15 03 78	G 1/4	G 1/8	550	37	24 V DC	200
K- 07 15 03 79	G 1/4	G 1/4	950	37	24 V DC	300
K- 07 15 03 80	G 3/8	G 1/4	950	37	24 V DC	300
K- 07 15 03 81	G 1/2"	G 1/2"	1600	37	24 V DC	400
K- 07 15 03 82	M 5	M 5	250	37	230 V, 50 Hz	100
K- 07 15 03 83	G 1/8	G 1/8	400	37	230 V, 50 Hz	100
K- 07 15 03 84	G 1/8	G 1/8	550	37	230 V, 50 Hz	200
K- 07 15 03 85	G 1/4	G 1/8	550	37	230 V, 50 Hz	200
K- 07 15 03 86	G 1/4	G 1/4	950	37	230 V, 50 Hz	300
K- 07 15 03 87	G 3/8	G 1/4	950	37	230 V, 50 Hz	300
K- 07 15 03 88	G 1/2"	G 1/2"	1600	37	230 V, 50 Hz	400