

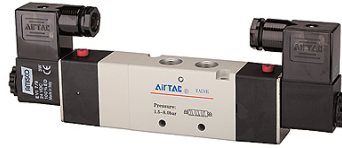
K-WV 5/3 ELEKTROPNEU ZENT ENTLUEF4V

5/3-way pilot valve, mid-position exhausted

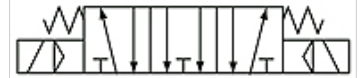
HANSA FLEX

Karakteristike

Radni tlak	1.5 - 8 bar
Temperaturno područje	-20 °C to +70 °C
Mjerenje vrijednosti protoka	At P1 = 8 bar, P2 = 6 bar and pressure drop $\Delta p = 1$ bar
Električni priključak	Connector Type B acc. to ISO 4400
min. radni tlak	1,5 bar
Vrsta zaštite	IP 65
Tijelo ventila	Aluminium alloy



38



Mid-position exhausted
Zentrum entlüftet

Napomena

Drugi podatci na zahtjev.

Artikli

Naziv	Priključak	Odzračni priključak	Protok (L/min)	Br. spojne sheme	Napon	Veličina
K- 07 15 03 89	M 5	M 5	250	38	24 V DC	100
K- 07 15 03 90	G 1/8	G 1/8	400	38	24 V DC	100
K- 07 15 03 91	G 1/8	G 1/8	550	38	24 V DC	200
K- 07 15 03 92	G 1/4	G 1/8	550	38	24 V DC	200
K- 07 15 03 93	G 1/4	G 1/4	950	38	24 V DC	300
K- 07 15 03 94	G 3/8	G 1/4	950	38	24 V DC	300
K- 07 15 03 95	G 1/2"	G 1/2	1600	38	24 V DC	400
K- 07 15 03 96	M 5	M 5	250	38	230 V, 50 Hz	100
K- 07 15 03 97	G 1/8	G 1/8	400	38	230 V, 50 Hz	100
K- 07 15 03 98	G 1/8	G 1/8	550	38	230 V, 50 Hz	200
K- 07 15 03 99	G 1/4	G 1/8	550	38	230 V, 50 Hz	200
K- 07 15 04 00	G 1/4	G 1/4	950	38	230 V, 50 Hz	300
K- 07 15 04 01	G 3/8	G 1/4	950	38	230 V, 50 Hz	300
K- 07 15 04 02	G 1/2"	G 1/2	1600	38	230 V, 50 Hz	400