

K-WV 5/3 ELEKTROPNEU ZENT BELF 4V

5/3-way pilot valve, mid-position pressurised

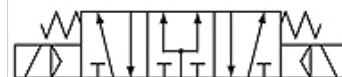
HANSA FLEX

Karakteristike

Radni tlak	1.5 - 8 bar
Temperaturno područje	-20 °C to +70 °C
Mjerenje vrijednosti protoka	At P1 = 8 bar, P2 = 6 bar and pressure drop $\Delta p = 1$ bar
Električni priključak	Connector Type B acc. to ISO 4400
min. radni tlak	1,5 bar
Vrsta zaštite	IP 65
Tijelo ventila	Aluminium alloy



39



Mid-position pressurised
Zentrum belüftet

Napomena

Drugi podatci na zahtjev.

Artikli

Naziv	Priključak	Odzračni priključak	Protok (L/min)	Br. spojne sheme	Napon	Veličina
K- 07 15 04 03	M 5	M 5	250	39	24 V DC	100
K- 07 15 04 04	G 1/8	G 1/8	400	39	24 V DC	100
K- 07 15 04 05	G 1/8	G 1/8	550	39	24 V DC	200
K- 07 15 04 06	G 1/4	G 1/8	550	39	24 V DC	200
K- 07 15 04 07	G 1/4	G 1/4	950	39	24 V DC	300
K- 07 15 04 08	G 3/8	G 1/4	950	39	24 V DC	300
K- 07 15 04 09	G 1/2"	G 1/2"	1600	39	24 V DC	400
K- 07 15 04 10	M 5	M 5	250	39	230 V, 50 Hz	100
K- 07 15 04 11	G 1/8	G 1/8	400	39	230 V, 50 Hz	100
K- 07 15 04 12	G 1/8	G 1/8	550	39	230 V, 50 Hz	200
K- 07 15 04 13	G 1/4	G 1/8	550	39	230 V, 50 Hz	200
K- 07 15 04 14	G 1/4	G 1/4	950	39	230 V, 50 Hz	300
K- 07 15 04 15	G 3/8	G 1/4	950	39	230 V, 50 Hz	300
K- 07 15 04 16	G 1/2"	G 1/2"	1600	39	230 V, 50 Hz	400