

K-STECKVERBINDU MINI

Unions, mini

HANSA FLEX

Karakteristike

Radni tlak Max. 10 bar, vacuum

Područje primjene Air, vacuum

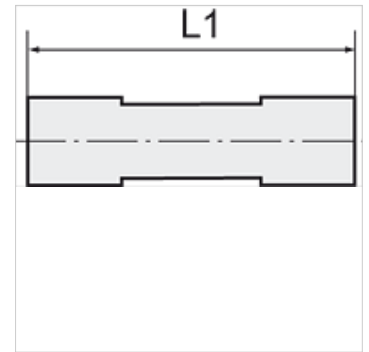
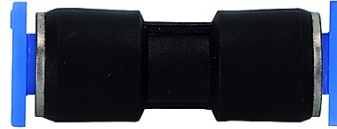
preporučena crijeva PU or PA (nylon)

Mediji komprimirani zrak

Temperaturno područje 0 °C to +60 °C

Materijal Plastic, Nickel plated brass

Pritisni prsten Plastic



Napomena

Drugi podatci na zahtjev.

Opis

Push-in fittings series manufactured in plastic and nickel-plated brass, space-saving miniature design.

Artikl

Naziv	za vanjski Ø crijeva	L1 (mm)
K- 07 40 23 81	3 mm	21,0
K- 07 40 23 82	4 mm	26,5
K- 07 40 23 83	6 mm	27,5