

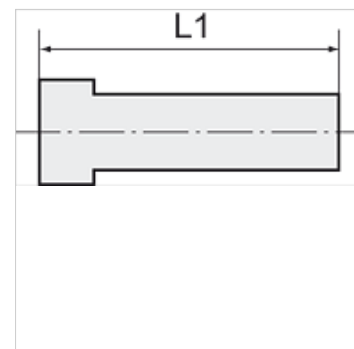
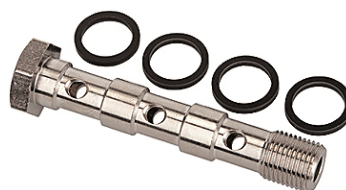
# K-HS DREIFACH

Banjo bolts, triple

**HANSA FLEX**

## Karakteristike

Radni tlak	Max. 16 bar
Radna temperatura	-20 °C to +70°C
Materijal	poniklani mjed



## Napomena

Drugi podatci na zahtjev.

## Artikl

Naziv	Navoj	L1 (mm)	SW (veličina ključa)
K- 07 40 26 80	G 1/8	60,0	14 mm
K- 07 40 26 79	G 1/4	70,5	17 mm
K- 07 40 26 81	G 3/8	80,0	19 mm