

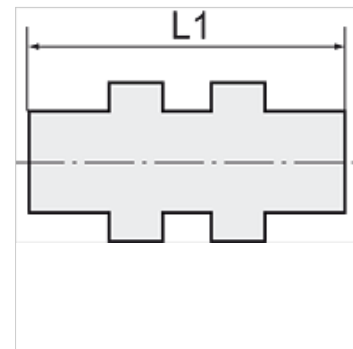
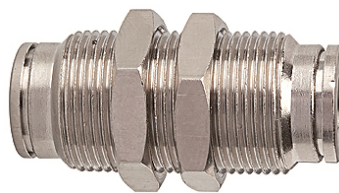
K-SCHOTT-STECKVERB 2

Female bulkhead connectors

HANSA FLEX

Karakteristike

Radni tlak	Max. 16 bar
Radna temperatura	-20 °C to +150 °C
Materijal	poniklani mjed
Pritisni prsten	Nickel-plated brass
Stezni prsten	Stainless steel



Napomena

Drugi podatci na zahtjev.

Opis

Push-in fittings, manufactured entirely in nickel-plated brass. All parts with a parallel thread are supplied with an FPM O-ring. All parts with conical threads are coated with preCOTE 5 dispersion, all fittings in this series can thus also be used at high temperatures (medium compressed air).

Artikli

Naziv	Navoj	za vanjski \varnothing crijeva	L1 (mm)	SW (veličina ključa)
K- 07 40 27 61	M 10 x 1	4 mm	31,5	13 mm
K- 07 40 27 62	M 14 x 1	6 mm	33,5	17 mm
K- 07 40 27 63	M 16 x 1	8 mm	37,0	18 mm
K- 07 40 27 64	M 17 x 1	10 mm	39,5	20 mm
K- 07 40 47 83	M 20 x 1	12 mm	42,0	24 mm
K- 07 40 47 84	M 22 x 1	14 mm	46,0	25 mm