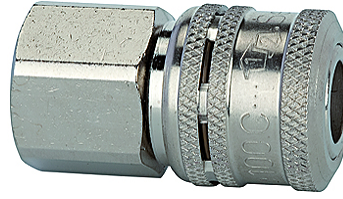


# K-LKM S NW7,2 IG

Safety couplings DN 7.2, female

## Karakteristike

Radni tlak	0 - 35 bar, maximum static working pressure (non-pulsating)
Protok zraka	1.100 l/min (at $\Delta p = 0.5$ bar)
Temperatura medija	-30 °C to +100 °C
Kućište, čahura, tijelo ventila	Nickel-plated brass
Opruga, kugle	Stainless-steel
Brtvni materijal	NBR



## Napomena

Drugi podatci na zahtjev.

## Opis

One-hand safety coupling with double locking mechanism. Connection: Similar to standard couplings, simply by pressing the plug into the coupling. Disconnection: The first locking mechanism is accessible when the sleeve is pushed back. The coupling valve closes. Air can then be relieved from the plug side (hose). The second locking mechanism is released by actuating the unlocking sleeve again. The coupling can now be disconnected.

## Artikl

Naziv	Priključak	Duljina (mm)	SW (mm)
K- 07 35 02 95	G 1/4 female	46,0	22
K- 07 35 02 96	G 3/8 female	46,0	22
K- 07 35 02 97	G 1/2 female	49,0	24

## Dodatni elementi

K-NIPPEL KUPPL NW7 AG VZ	Plugs for couplings DN 7.2 - DN 7.8, hardened, galvanised steel, male
K-NIPPEL KUPPL NW7 IG VZ 1	Plugs for couplings DN 7.2 - DN 7.8, hardened and galvanised steel, female
K-TUE 7,2 7,8 ST VZ 1	Stems for couplings DN 7.2 - DN 7.8, hardened, galvanised steel,