

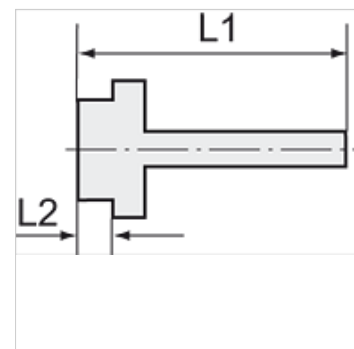
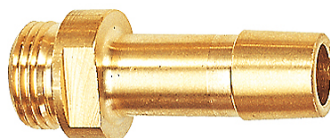
# K-EST 12 MS

Male stems for coupling NW12 MS

**HANSA FLEX**

## Karakteristike

Radni tlak	10 bar
Temperatura medija	max. +90 °C
Okolna temperatura	Max. +90 °C
Materijal	Brass with a bare metal surface



## Napomena

The dimensions of the standard screw fittings may change slightly during the life of the catalogue as a result of optimisation processes.  
Drugi podatci na zahtjev.

## Dodatne informacije

Further types and dimensions on request.

## Artikl

Naziv	Navoj	za crijevo	L1 (mm)	L2 (mm)	SW (veličina ključa)
K- 07 35 00 88	G 1/2	LW 16 mm	58,0	10,0	20 mm