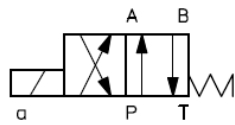


# HK 41 C1 (7/G/Q/R)

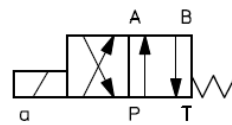
Magnetwegeventil NG6  
Solenoid valve Size6

**HANSA FLEX**

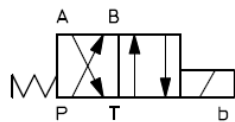
## Schaltsymbole, Ausführungen / Symbols, Design



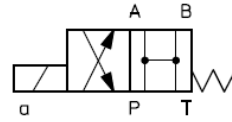
**HK 41 3151 0101 C1**



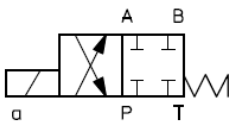
**HK 41 3111 0101 C1**



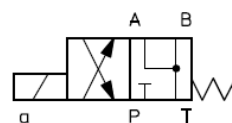
**HK 41 3151 0201 C1**



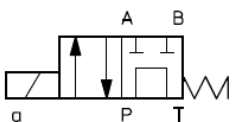
**HK 41 3101 0601 C1**



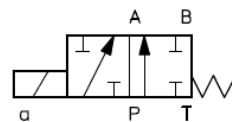
**HK 41 3103 0601 C1**



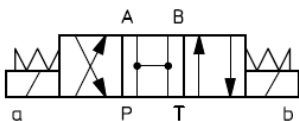
**HK 41 3108 0601 C1**



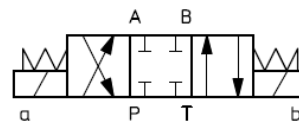
**HK 41 3107 0601 C1**



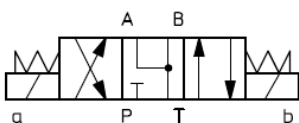
**HK 41 3152 0101 C1**



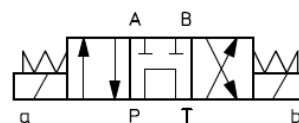
**HK 41 3201 0302 C1**



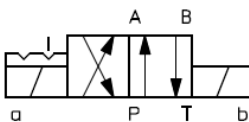
**HK 41 3203 0302 C1**



**HK 41 3208 0302 C1**



**HK 41 3207 0302 C1**



**HK 41 3751 0902 C1**

# HK 41 C1 (7/G/Q/R)

Magnetwegeventil NG6  
Solenoid valve Size6



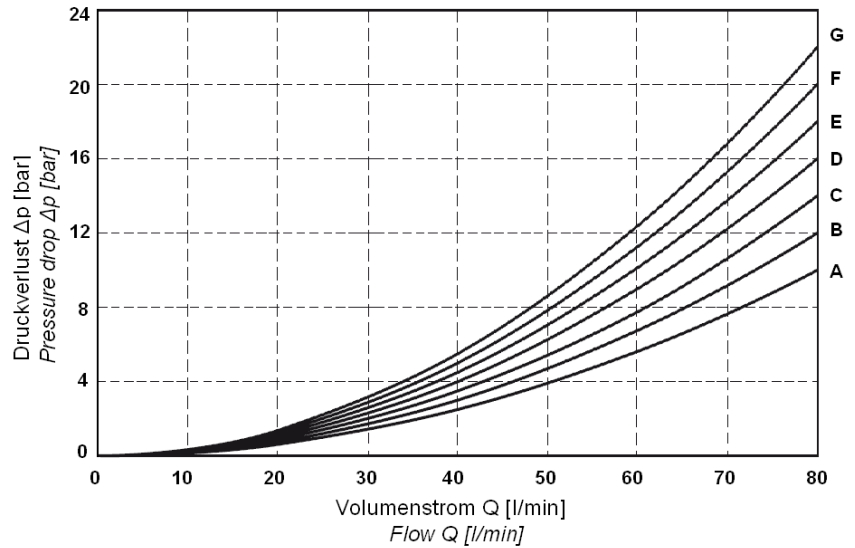
Kolbentypen, Durchflussrichtungen, Q/Δp – Kennlinien / Spool type, flow direction, Q/Δp - diagram

## HK 41 C1 (7/G/Q/R)

Durchflussrichtung Flow direction	Kolbentyp Spool type			
	P→A	P→B	A→T	B→T
01	A	A	D	D
03	B	B	B	B
07	E	F	G	E
08	B	B	C	C
11	B	A	B	C
51	D	B	C	D
52	C	B	-	-

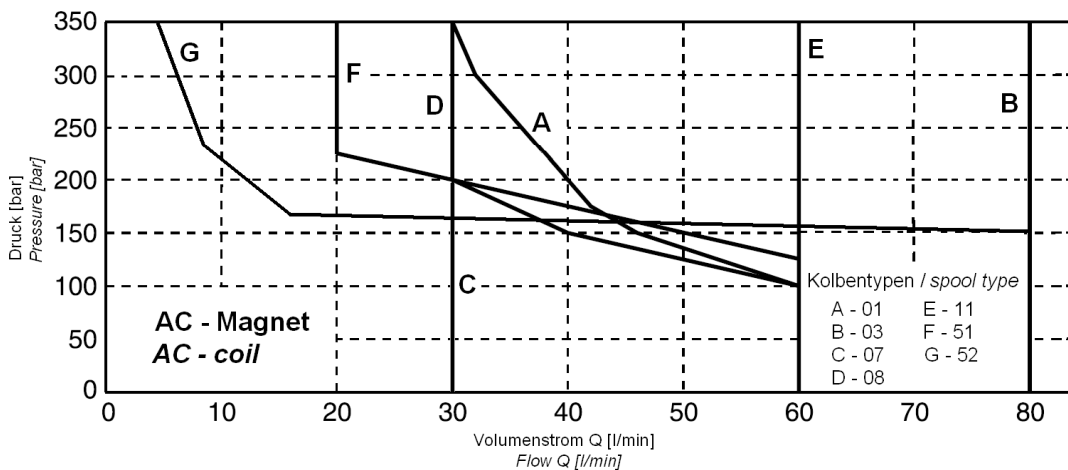
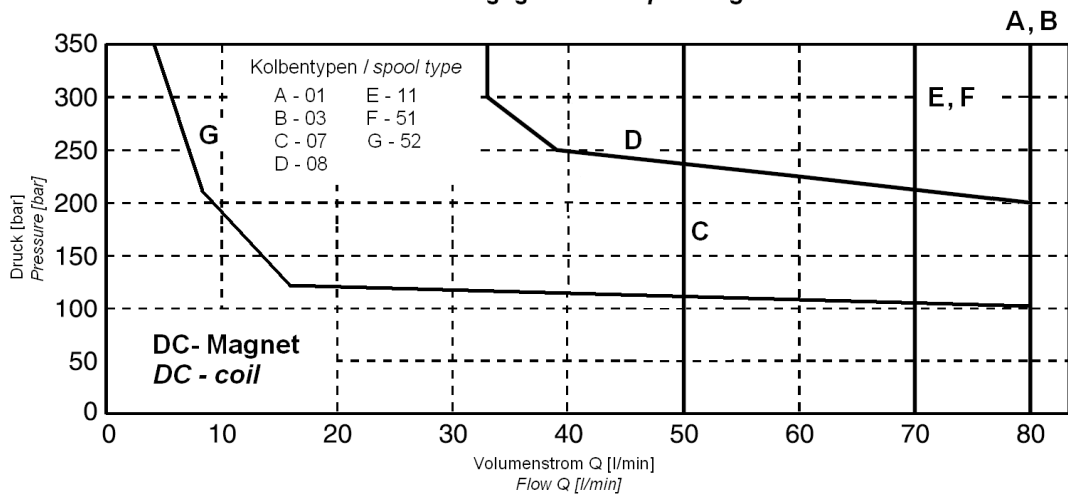
## Q/Δp Diagramm

## Q/Δp Diagram



Diagramme, Kennlinien / Diagram, chart

## Schaltleistungsgrenzen / Operating limits



# HK 41 C1 (7/G/Q/R)

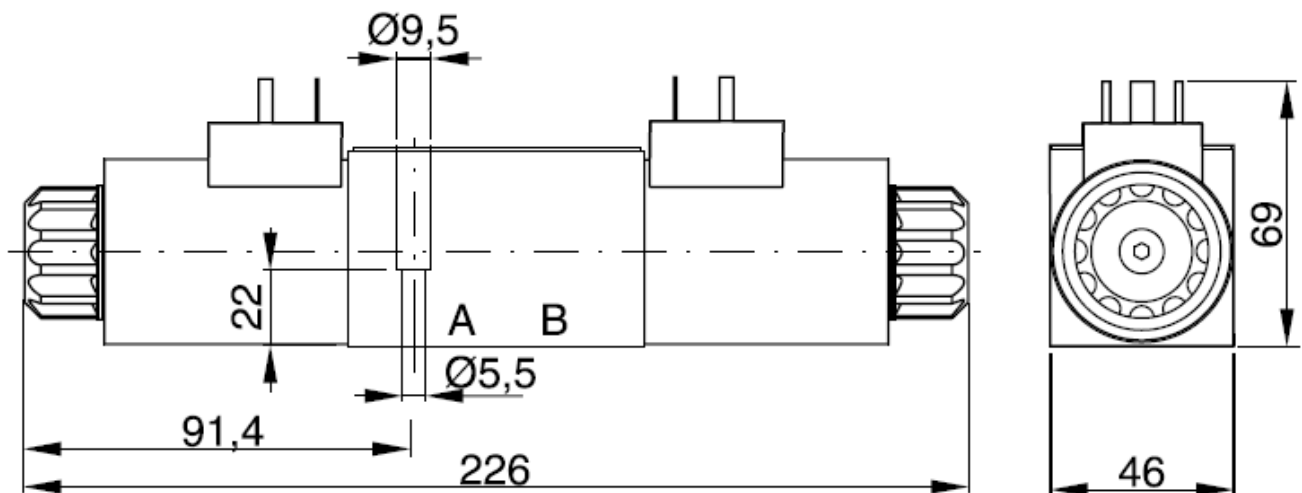
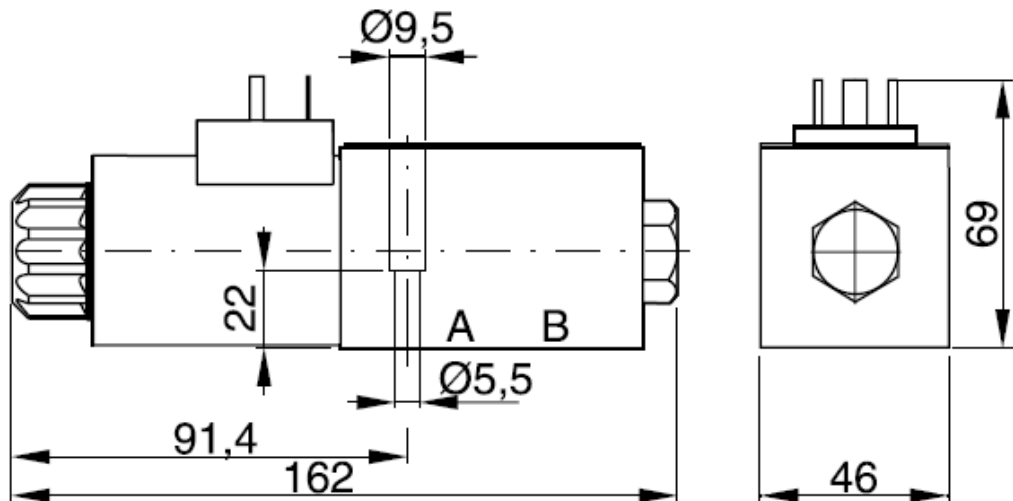
Magnetwegeventil NG6  
*Solenoid valve Size6*

**HANSA FLEX**

## Abmessungen / Dimensions

Ventil mit DC-Magneten

*Valve with DC-coils*



Schraubensatz: 4 Inbusschrauben M5x30 12.9

*Screw set: 4 socket head screws M5x30 12.9*

# HK 41 C1 (7/G/Q/R)

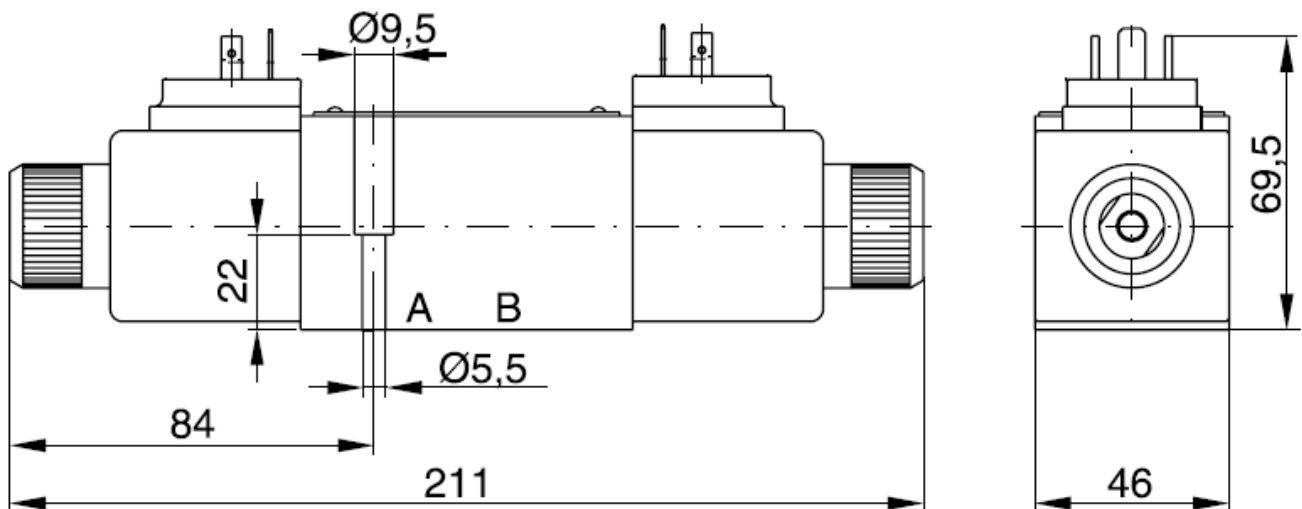
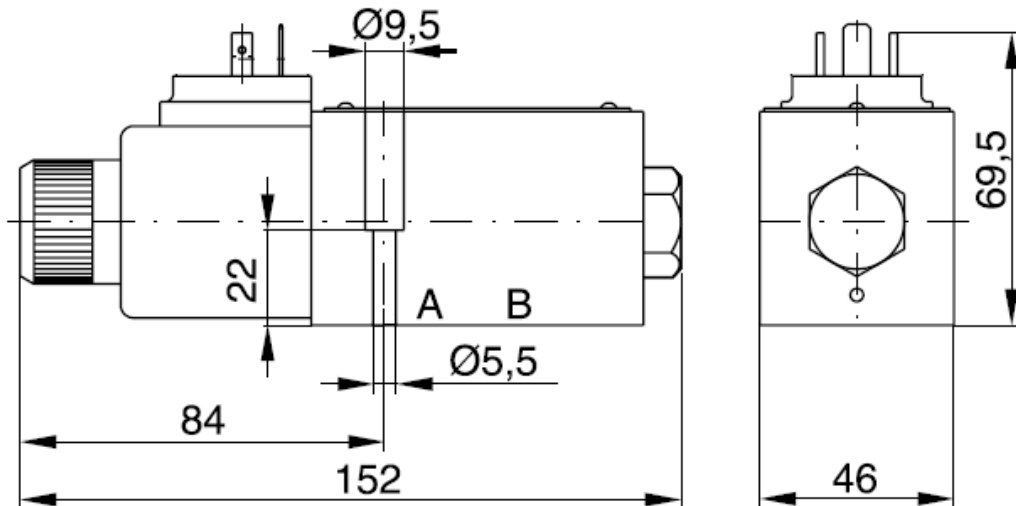
Magnetwegeventil NG6  
*Solenoid valve Size6*

**HANSA FLEX**

## Abmessungen / Dimensions

Ventil mit AC-Magneten

*Valve with AC-coils*



Schraubensatz: 4 Inbusschrauben M5x30 12.9

*Screw set: 4 socket head screws M5x30 12.9*