

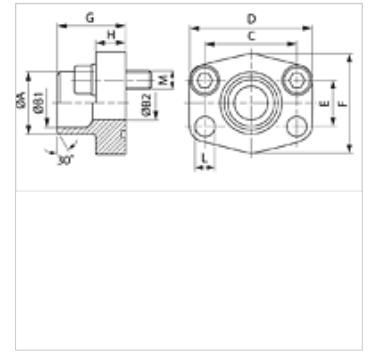
# AFS SRE M (3000 / 6000 PSI)

SAE hegeszthető csonek

**HANSA FLEX**

## Tulajdonságok

|                             |   |
|-----------------------------|---|
| <b>Szabvány</b>             | SAE J 518 C<br>ISO 6162                 |
| <b>Szerkezeti forma</b>     | egyenes                                 |
| <b>Szerkezeti mód</b>       | SAE ráhegeszhető csonek                 |
| <b>Rögzítés</b>             | Csavarfurat                             |
| <b>Szállítás terjedelme</b> | metrikus csavarkészlettel és O-gyűrűvel |
| <b>Anyag</b>                | S355J2G3 (ST52.3)                       |
| <b>Felületvédelem</b>       | fekete, olajozva                        |



## Megjegyzés

A feltüntetett maximális üzemi nyomás a karimára vonatkozik! A tényleges üzemi nyomást a cső (falvastagsága), valamint a cső (anyag)minősége határozza meg!

## Cikk

| Megnevezés       | Nyomás sorozat | PB 10.9 (bar) | Méret  | Cső         | A    | B1   | B2   | G    | C     | D    | E    | F    | H    | L    | M metr.   |
|------------------|----------------|---------------|--------|-------------|------|------|------|------|-------|------|------|------|------|------|-----------|
|                  |                |               |        |             | (mm) | (mm) | (mm) | (mm) | (mm)  | (mm) | (mm) | (mm) | (mm) | (mm) |           |
| AFS 80 SRE 20 M  | 3000 PSI       | 350           | 1/2"   | 20 x 3      | 20   | 14,0 | 14   | 35,0 | 38,1  | 54   | 17,5 | 46   | 16,0 | 9,0  | M 8 x 30  |
| AFS 80 SRE 22 M  | 3000 PSI       | 350           | 1/2"   | 22 x 3      | 22   | 16,0 | 13   | 35,0 | 38,1  | 54   | 17,5 | 46   | 16,0 | 9,0  | M 8 x 30  |
| AFS 100 SRE 25 M | 3000 PSI       | 350           | 3/4"   | 25 x 3      | 25   | 19,0 | 19   | 36,0 | 47,6  | 65   | 22,2 | 50   | 18,0 | 11,0 | M 10 x 35 |
| AFS 100 SRE 28 M | 3000 PSI       | 350           | 3/4"   | 28 x 3      | 28   | 21,5 | 19   | 36,0 | 47,6  | 65   | 22,2 | 50   | 18,0 | 11,0 | M 10 x 35 |
| AFS 102 SRE 30 M | 3000 PSI       | 315           | 1"     | 30 x 4      | 30   | 22,0 | 22   | 38,0 | 52,4  | 70   | 26,2 | 55   | 18,0 | 11,0 | M 10 x 35 |
| AFS 102 SRE 35 M | 3000 PSI       | 315           | 1"     | 35 x 4      | 35   | 27,0 | 25   | 38,0 | 52,4  | 70   | 26,2 | 55   | 18,0 | 11,0 | M 10 x 35 |
| AFS 104 SRE 38 M | 3000 PSI       | 250           | 1.1/4" | 38 x 4      | 38   | 30,0 | 30   | 41,0 | 58,7  | 79   | 30,2 | 68   | 21,0 | 11,5 | M 10 x 40 |
| AFS 104 SRE 42 M | 3000 PSI       | 250           | 1.1/4" | 42 x 3      | 43   | 36,0 | 31   | 41,0 | 58,7  | 79   | 30,2 | 68   | 21,0 | 11,5 | M 10 x 40 |
| AFS 106 SRE 38 M | 3000 PSI       | 200           | 1.1/2" | 38 x 4      | 38   | 30,0 | 30   | 44,0 | 69,9  | 93   | 35,7 | 78   | 25,0 | 13,5 | M 12 x 45 |
| AFS 106 SRE 42 M | 3000 PSI       | 200           | 1.1/2" | 42 x 3      | 42   | 36,0 | 36   | 44,0 | 69,9  | 93   | 35,7 | 78   | 25,0 | 13,5 | M 12 x 45 |
| AFS 106 SRE 48 M | 3000 PSI       | 200           | 1.1/2" | 48,3 x 4,5  | 49   | 38,0 | 38   | 44,0 | 69,9  | 93   | 35,7 | 78   | 25,0 | 13,5 | M 12 x 45 |
| AFS 108 SRE 60 M | 3000 PSI       | 200           | 2"     | 60,3 x 5,6  | 61   | 49,0 | 49   | 45,0 | 77,8  | 102  | 42,9 | 90   | 25,0 | 13,5 | M 12 x 45 |
| AFS 110 SRE 76 M | 3000 PSI       | 160           | 2.1/2" | 76,1 x 7,1  | 77   | 62,0 | 62   | 50,0 | 88,9  | 114  | 50,8 | 105  | 25,0 | 13,5 | M 12 x 45 |
| AFS 112 SRE 76 M | 3000 PSI       | 160           | 3"     | 76,1 x 7,1  | 77   | 62,0 | 62   | 51,0 | 106,4 | 134  | 61,9 | 124  | 26,0 | 17,5 | M 16 x 50 |
| AFS 401 SRE 20 M | 6000 PSI       | 400           | 1/2"   | 20 x 3      | 20   | 14,0 | 14   | 34,0 | 40,5  | 54   | 18,2 | 46   | 16,0 | 9,0  | M 8 x 30  |
| AFS 402 SRE 20 M | 6000 PSI       | 400           | 3/4"   | 20 x 3      | 20   | 14,0 | 14   | 35,0 | 50,8  | 71   | 23,8 | 55   | 21,0 | 11,0 | M 10 x 35 |
| AFS 402 SRE 25 M | 6000 PSI       | 400           | 3/4"   | 25 x 4      | 25   | 17,0 | 17   | 35,0 | 50,8  | 71   | 23,8 | 55   | 21,0 | 11,0 | M 10 x 35 |
| AFS 403 SRE 25 M | 6000 PSI       | 400           | 1"     | 25 x 4      | 25   | 17,0 | 17   | 42,0 | 57,2  | 81   | 27,8 | 65   | 25,0 | 13,0 | M 12 x 45 |
| AFS 403 SRE 30 M | 6000 PSI       | 400           | 1"     | 30 x 4      | 30   | 22,0 | 22   | 42,0 | 57,2  | 81   | 27,8 | 65   | 25,0 | 13,0 | M 12 x 45 |
| AFS 404 SRE 30 M | 6000 PSI       | 400           | 1.1/4" | 30 x 4      | 30   | 22,0 | 22   | 44,0 | 66,7  | 95   | 31,8 | 78   | 25,0 | 15,0 | M 14 x 45 |
| AFS 404 SRE 38 M | 6000 PSI       | 400           | 1.1/4" | 38 x 6      | 38   | 26,0 | 26   | 44,0 | 66,7  | 95   | 31,8 | 78   | 25,0 | 15,0 | M 14 x 45 |
| AFS 405 SRE 38 M | 6000 PSI       | 400           | 1.1/2" | 38 x 6      | 38   | 26,0 | 26   | 56,0 | 49,4  | 112  | 36,5 | 94   | 28,0 | 17,0 | M 16 x 50 |
| AFS 405 SRE 48 M | 6000 PSI       | 400           | 1.1/2" | 48,3 x 8    | 49   | 32,0 | 32   | 56,0 | 79,4  | 112  | 36,5 | 94   | 28,0 | 17,0 | M 16 x 50 |
| AFS 405 SRE 60 M | 6000 PSI       | 400           | 1.1/2" | 60,3 x 10   | 61   | 40,0 | 40   | 56,0 | 79,4  | 112  | 36,5 | 94   | 27,0 | 17,0 | M 16 x 50 |
| AFS 406 SRE 60 M | 6000 PSI       | 400           | 2"     | 60,3 x 10   | 61   | 40,0 | 40   | 65,0 | 96,8  | 134  | 44,5 | 114  | 37,0 | 21,0 | M 20 x 60 |
| AFS 406 SRE 76 M | 6000 PSI       | 400           | 2"     | 76,1 x 12,5 | 76   | 50,0 | 48   | 80,0 | 96,8  | 134  | 44,5 | 122  | 33,0 | 21,0 | M 20 x 60 |

PN = névleges nyomás PB = max. üzemi nyomás - Ø = cső külső átmérő

## Termékváltozatok

|                                    |  |
|------------------------------------|--|
| <b>AFS SRE (3000 PSI)</b>          | SAE hegeszthető csonek, csak karima                        |
| <b>AFS SRE U (3000 / 6000 PSI)</b> | SAE hegeszthető csonek, UNC csavarkészlettel és O-gyűrűvel |